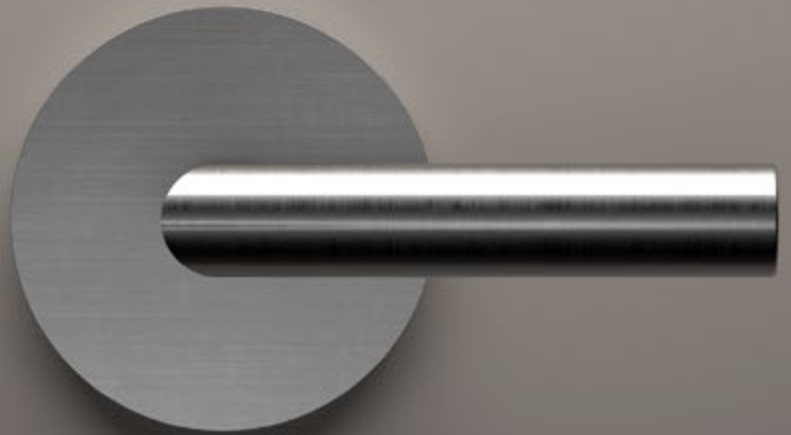


# *ICONA DEL DESIGN NEL TEMPO*

ICON OF DESIGN IN TIME  
ICONA DEL DISEÑO EN EL TIEMPO

**LQ**



**LQ**

STAINLESS STEEL AISI304

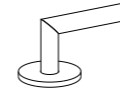
made in Italy

# ELEGANZA E COLORE

Evoluzione nel design, nell'architettura,  
nelle superfici e nei colori.  
Dettagli raffinati.

Evolution in design, architecture,  
in the surfaces and colors.  
Fine details.

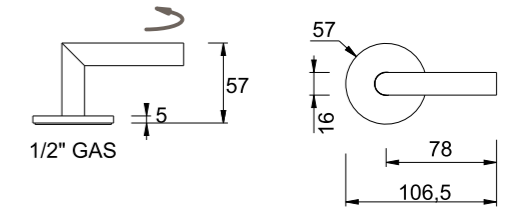
Evolución en el diseño, la arquitectura,  
en las superficies y colores.  
Los detalles finos.



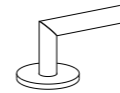
## LQ

### Rubinetto apri/chiedi a piano, acqua calda 1/2"

Deck mounted shut-off valve, hot water.  
Kaltwasser Absperrventil.  
Grifo individual de repisa, agua caliente.  
Robinet d'ouverture et d'arret sur plan, eau chaude.



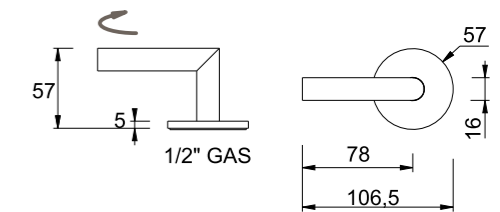
RA -rame/copper bronze GO -british gold GM -nero/gunmetal



## LQ

### Rubinetto apri/chiedi a piano, acqua fredda 1/2"

Deck mounted shut-off valve, cold water.  
Kaltwasser Absperrventil.  
Grifo individual de repisa, agua fria.  
Robinet d'ouverture et d'arret sur plan, eau froide.



RA -rame/copper bronze GO -british gold GM -nero/gunmetal

## ANNOTAZIONI:

- IT** Il simbolo freccia indica il verso di chiusura acqua.
- EN** The arrow symbol indicates the direction of closing water.
- DE** Das Pfeilsymbol zeigt die Richtung an das Wasser des Schließens.
- F** Le symbole de la flèche indique la direction de fermer l'eau.
- ES** El símbolo de la flecha indica la dirección de cerrando la agua.

IT  
SA = Satinato  
LU = Lucido  
PVD = Colori speciali

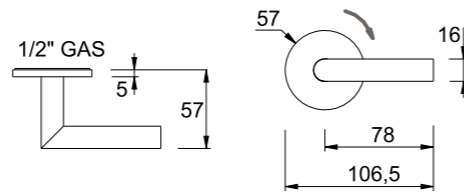
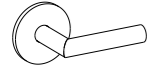
DE  
SA = Satiniert  
LU = Glänzend  
PVD = Sonderfarben

EN  
SA = Satin  
LU = Polished  
PVD = Special colour

F  
SA = Satinée  
LU = Poli  
PVD = Couleurs spéciales

**LQ****Rubinetto apri/chiedi a parete , acqua fredda 1/2"**

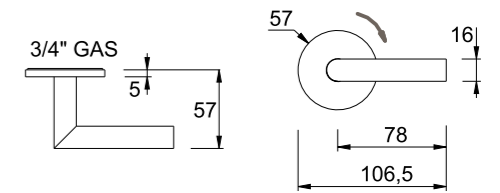
Wall mounted shut-off valve, cold water 1/2".  
 Wandeinbau Absperrventil, Kaltwasser 1/2".  
 Grifo individual mural, agua fria 1/2".  
 Robinet d'ouverture et d'arret mural, eau froide 1/2".



RA -rame/copper bronze GO -british gold GM -nero/gunmetal

**LQ****Rubinetto apri/chiedi a parete , acqua fredda 3/4"**

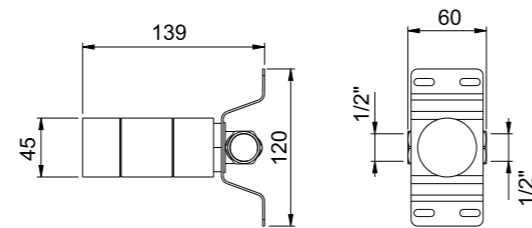
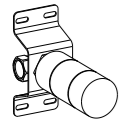
Wall mounted shut-off valve, cold water 3/4".  
 Wandeinbau Absperrventil, Kaltwasser 3/4".  
 Grifo individual mural, agua fria 3/4".  
 Robinet d'ouverture et d'arret mural, eau froide 3/4".



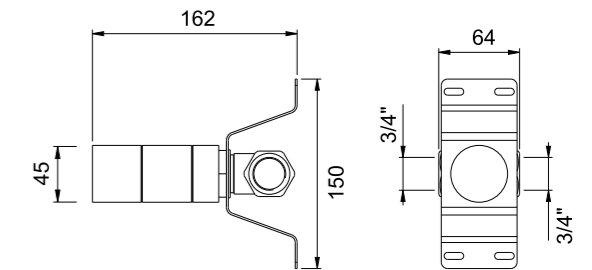
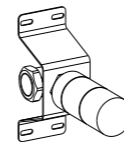
RA -rame/copper bronze GO -british gold GM -nero/gunmetal

**LQ****Corpo ad incasso per art. LE01DX**

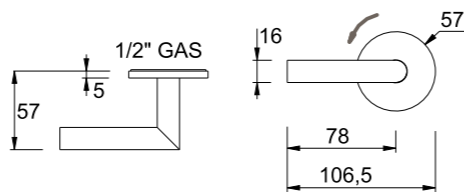
Concealed valve for art. LE01DX.  
 Unterputzteil zu art. LE01DX.  
 Mecanismo empotrado para art. LE01DX.  
 Corps d'encastrement pour art. LE01DX.

**LQ****Corpo ad incasso per art. LE03DX**

Concealed valve for art. LE03DX.  
 Unterputzteil zu art. LE03DX.  
 Mecanismo empotrado para art. LE03DX.  
 Corps d'encastrement pour art. LE03DX.

**LQ****Rubinetto apri/chiedi a parete , acqua calda 1/2"**

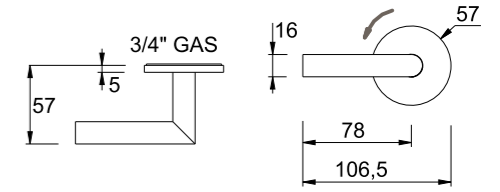
Wall mounted shut-off valve, hot water 1/2".  
 Wandeinbau Absperrventil, Warmwasser 1/2".  
 Grifo individual mural, agua caliente 1/2".  
 Robinet d'ouverture et d'arret mural, eau chaude 1/2".



RA -rame/copper bronze GO -british gold GM -nero/gunmetal

**LQ****Rubinetto apri/chiedi a parete , acqua calda 3/4"**

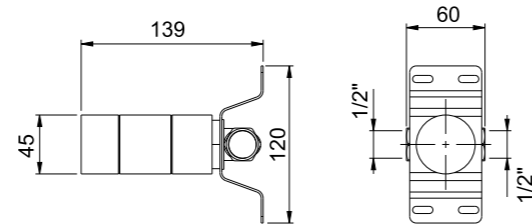
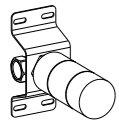
Wall mounted shut-off valve, hot water 3/4".  
 Wandeinbau Absperrventil, Warmwasser 3/4".  
 Grifo individual mural, agua caliente 3/4".  
 Robinet d'ouverture et d'arret mural, eau chaude 3/4".



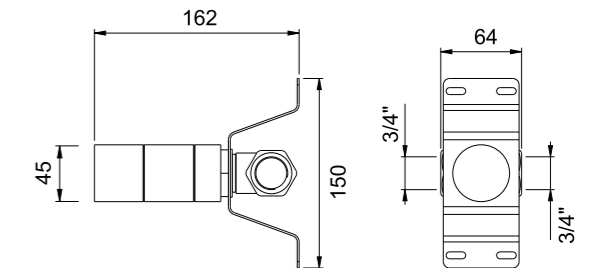
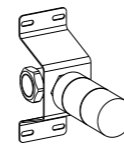
RA -rame/copper bronze GO -british gold GM -nero/gunmetal

**LQ****Corpo ad incasso per art. LE01SX**

Concealed valve for art. LE01SX.  
 Unterputzteil zu art. LE01SX.  
 Mecanismo empotrado para art. LE01SX.  
 Corps d'encastrement pour art. LE01SX.

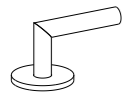
**LQ****Corpo ad incasso per art. LE03SX**

Concealed valve for art. LE03SX.  
 Unterputzteil zu art. LE03SX.  
 Mecanismo empotrado para art. LE03SX.  
 Corps d'encastrement pour art. LE03SX.



IT	DE	EN	F
SA = Satinato	SA = Satiniert	SA = Satin	SA = Satinée
LU = Lucido	LU = Glänzend	LU = Polished	LU = Poli
PVD = Colori speciali	PVD = Sonderfarben	PVD = Special colour	PVD = Couleurs spéciales

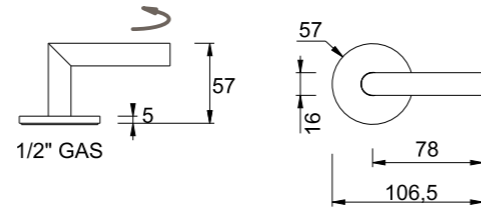
IT	DE	EN	F
SA = Satinato	SA = Satiniert	SA = Satin	SA = Satinée
LU = Lucido	LU = Glänzend	LU = Polished	LU = Poli
PVD = Colori speciali	PVD = Sonderfarben	PVD = Special colour	PVD = Couleurs spéciales



**LQ**

**Miscelatore idroprogressivo a piano**

Deck mounted hydroprogressive mixer.  
Hydroprogressiver Mischer.  
Grifo hidroprogresivo de repisa.  
Mitigeur hydroprogressif sur plan.



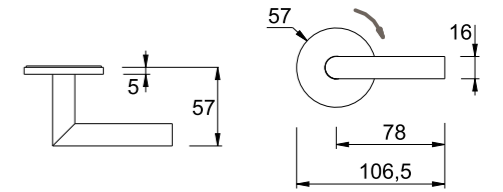
RA -rame/copper bronze GO -british gold GM -nero/gunmetal



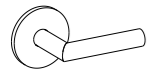
**LQ**

**Maniglia per deviatore doccia/vasca incasso a parete «parte esterna»**

Diverter shower/tub recessed wall «outside part»  
Griff f. Umsteller  
Desviador ducha/bañera empotrado en la pared «parte externo»  
Déviateur douche/baignoire encastré mur «partie extérieure»



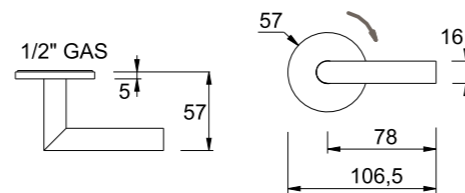
RA -rame/copper bronze GO -british gold GM -nero/gunmetal



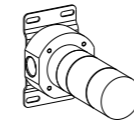
**LQ**

**Miscelatore idroprogressivo a parete**

Wall mounted hydroprogressive mixer.  
Wandebau hydroprogressiver Mischer.  
Grifo hidroprogresivo mural.  
Mitigeur hydroprogressif mural.



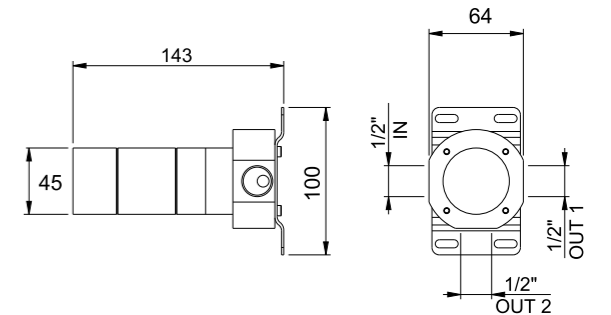
RA -rame/copper bronze GO -british gold GM -nero/gunmetal



**LQ**

**Corpo ad incasso per deviatore 2 vie art. LE20**

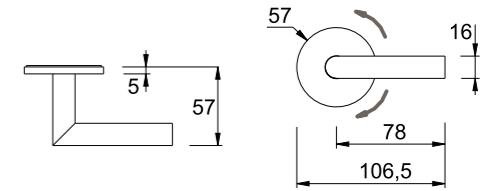
Concealed valve for 2 way diverter art. LE20 .  
Unterputzteil zu art. LE20.  
Mecanismo empotrado para 2 vias desviador art. LE20.  
Corps d'encastrement pour déviateur à 2 voies art. LE20.



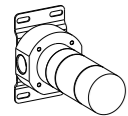
**LQ**

**Maniglia per deviatore doccia/vasca incasso a parete «parte esterna»**

Diverter shower/tub recessed wall «outside part»  
Griff f. Umsteller  
Desviador ducha/bañera empotrado en la pared «parte externo»  
Déviateur douche/baignoire encastré mur «partie extérieure»



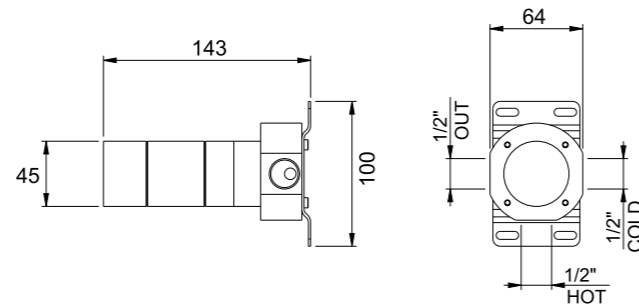
RA -rame/copper bronze GO -british gold GM -nero/gunmetal



**LQ**

**Corpo ad incasso per art. LE11**

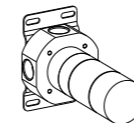
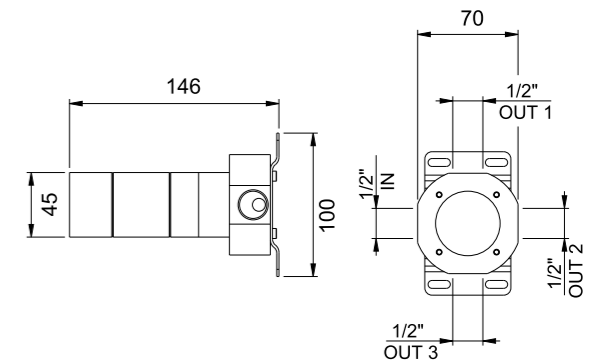
Concealed valve for art. LE11.  
Unterputzteil zu art. LE11.  
Mecanismo empotrado para art. LE11.  
Corps d'encastrement pour art. LE11.



**LQ**

**Corpo ad incasso per deviatore 3 vie art. LE21**

Concealed valve for 3 way diverter art. LE21 .  
Unterputzteil zu art. LE21.  
Mecanismo empotrado para 3 vias desviador art. LE21.  
Corps d'encastrement pour déviateur à 3 voies art. LE21.



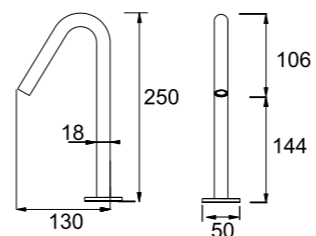
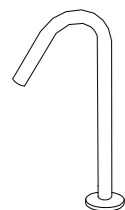
IT	DE	EN	F
SA = Satinato	SA = Satiniert	SA = Satin	SA = Satinée
LU = Lucido	LU = Glänzend	LU = Polished	LU = Poli
PVD = Colori speciali	PVD = Sonderfarben	PVD = Special colour	PVD = Couleurs spéciales

IT	DE	EN	F
SA = Satinato	SA = Satiniert	SA = Satin	SA = Satinée
LU = Lucido	LU = Glänzend	LU = Polished	LU = Poli
PVD = Colori speciali	PVD = Sonderfarben	PVD = Special colour	PVD = Couleurs spéciales

### COMPLEMENTS

#### Bocca lavabo appoggio forma a cigno H 250 mm

Deck mounted swan-neck basin spout H 250 mm  
Schwanenhalsfoermiger-Auslauf H 250 mm  
Caño repisa en forma de cisne H 250 mm  
Bouche lavabo soutien forme de cygne H 250 mm

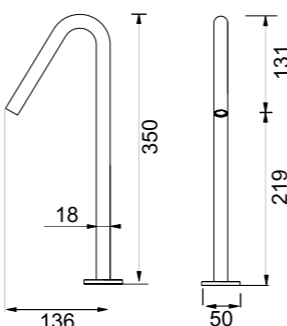
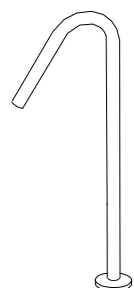


RA -rame/copper bronze GO -british gold GM -nero/gunmetal

### COMPLEMENTS

#### Bocca lavabo appoggio forma a cigno H 350 mm

Deck mounted swan-neck basin spout H 350 mm  
Schwanenhalsfoermiger-Auslauf H 350 mm - Ausladung 136 mm  
Caño repisa en forma de cisne H 350 mm  
Bouche lavabo soutien forme de cygne H 350 mm

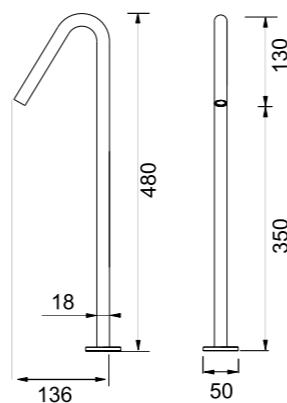
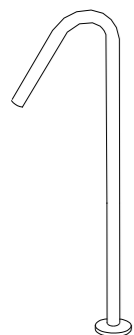


RA -rame/copper bronze GO -british gold GM -nero/gunmetal

### COMPLEMENTS

#### Bocca lavabo appoggio forma a cigno H 480 mm

Deck mounted swan-neck basin spout H 480 mm  
Schwanenhalsfoermiger Auslauf H 480 mm - Ausladung 136 mm  
Caño repisa en forma de cisne H 480 mm  
Bouche lavabo soutien forme de cygne H 480 mm

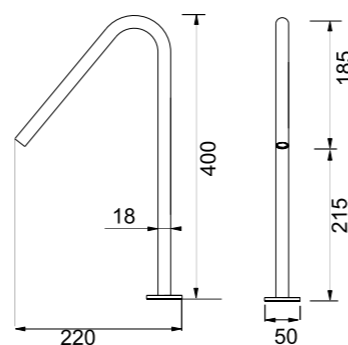
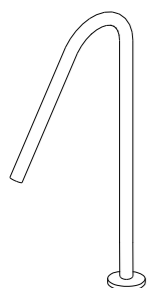


RA -rame/copper bronze GO -british gold GM -nero/gunmetal

### COMPLEMENTS

#### Bocca lavabo appoggio forma a cigno H 400 mm

Deck mounted swan-neck basin spout H 400 mm  
Schwanenhalsfoermiger-Auslauf H 400 mm - Ausladung 220 mm  
Caño repisa en forma de cisne H 400 mm  
Bouche lavabo soutien forme de cygne H 400 mm

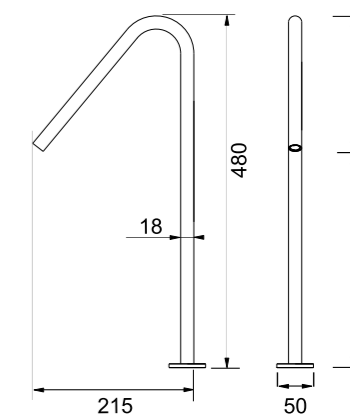
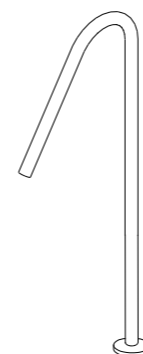


RA -rame/copper bronze GO -british gold GM -nero/gunmetal

### COMPLEMENTS

#### Bocca lavabo appoggio forma a cigno H 480 mm

Deck mounted swan-neck basin spout H 480 mm  
Schwanenhalsfoermiger-Auslauf H 480 mm - Ausladung 220 mm  
Caño repisa en forma de cisne H 480 mm  
Bouche lavabo soutien forme de cygne H 480 mm



RA -rame/copper bronze GO -british gold GM -nero/gunmetal

IT  
SA = Satinato  
LU = Lucido  
PVD = Colori speciali

DE  
SA = Satiniert  
LU = Glaenzend  
PVD = Sonderfarben

EN  
SA = Satin  
LU = Polished  
PVD = Special colour

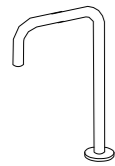
F  
SA = Satinée  
LU = Poli  
PVD = Couleurs spéciales

IT  
SA = Satinato  
LU = Lucido  
PVD = Colori speciali

DE  
SA = Satiniert  
LU = Glaenzend  
PVD = Sonderfarben

EN  
SA = Satin  
LU = Polished  
PVD = Special colour

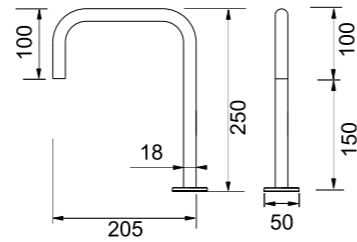
F  
SA = Satinée  
LU = Poli  
PVD = Couleurs spéciales



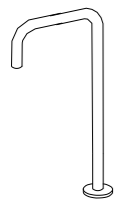
### COMPLEMENTS

#### Bocca lavabo appoggio forma quadra H 250 mm

Deck mounted square neck basin spout H 250 mm  
 U-foermiger Auslauf H 250 mm  
 Caño repisa en forma cuadrada H 250 mm  
 Bouche lavabo soutien forme carrée H 250 mm



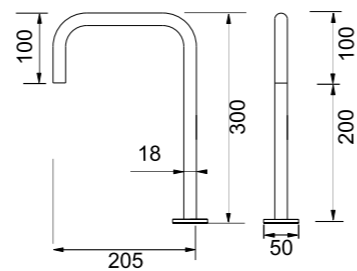
RA -rame/copper bronze GO -british gold GM -nero/gunmetal



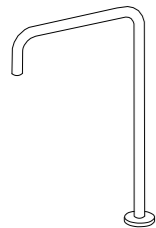
### COMPLEMENTS

#### Bocca lavabo appoggio forma quadra H 300 mm

Deck mounted square neck basin spout H 300 mm  
 U-foermiger Auslauf H 300 mm - Ausladung 205 mm  
 Caño repisa en forma cuadrada H 300 mm  
 Bouche lavabo soutien forme carrée H 300 mm



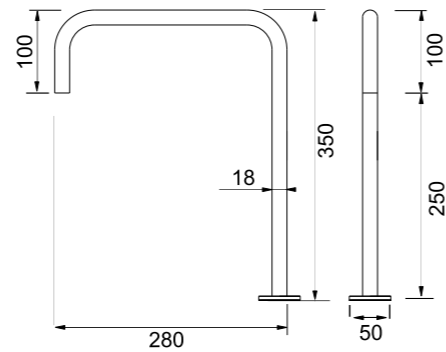
RA -rame/copper bronze GO -british gold GM -nero/gunmetal



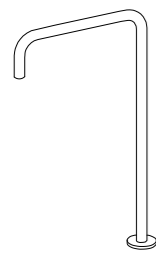
### COMPLEMENTS

#### Bocca lavabo appoggio forma quadra H 350 mm

Deck mounted square neck basin spout H 350 mm  
 U-foermiger Auslauf H 350 mm - Ausladung 280 mm  
 Caño repisa en forma cuadrada H 350 mm  
 Bouche lavabo soutien forme carrée H 350 mm



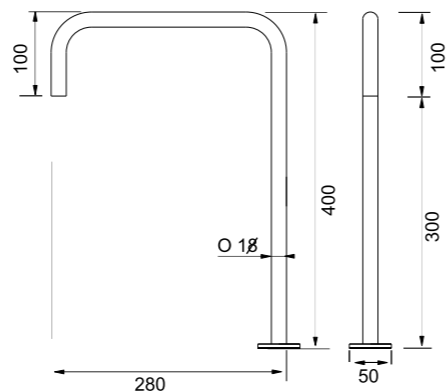
RA -rame/copper bronze GO -british gold GM -nero/gunmetal



### COMPLEMENTS

#### Bocca lavabo appoggio forma quadra H 400 mm

Deck mounted square neck basin spout H 400 mm  
 U-foermiger Auslauf H 400 mm - Ausladung 280 mm  
 Caño repisa en forma cuadrada H 400 mm  
 Bouche lavabo soutien forme carrée H 400 mm



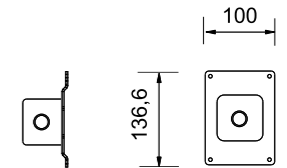
RA -rame/copper bronze GO -british gold GM -nero/gunmetal



### COMPLEMENTS

#### Corpo incasso bocche lavabo/bidet/vasca a parete

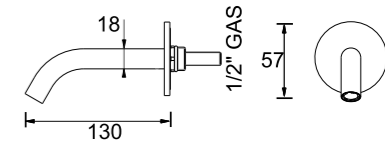
Concealed valve basin - bidet - tub for wall mount spout.  
 Unterputz-Einbauteil f. Wandauslauf mit Befestigungsplatte  
 Cuerpo empotrado caño de lavabo - bidé - bañera a pared  
 Corps encastré bouches lavabo - bidet - baignoire à mur



### COMPLEMENTS

#### Bocca lavabo incasso a parete P 130 mm

Wall mount sink spout, concealed valve not included P 130 mm.  
 Wandauslauf - Ausladung 130 mm  
 Caño a pared, cuerpo empotrado no incluido P 130 mm.  
 Bec encastré mural pour lavabo, sans corps d'encastrement P 130 mm.



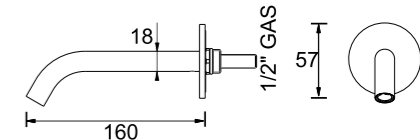
RA -rame/copper bronze GO -british gold GM -nero/gunmetal



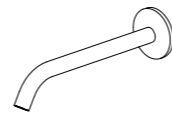
### COMPLEMENTS

#### Bocca lavabo incasso a parete P 160 mm

Wall mount sink spout, concealed valve not included P 160 mm.  
 Wandauslauf - Ausladung 160 mm  
 Lavabo boca empotrado pared, cuerpo empotrado no incluido P 160 mm.  
 Bec encastré mural pour lavabo, sans corps d'encastrement P 160 mm.



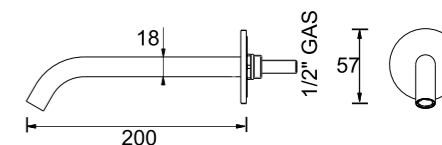
RA -rame/copper bronze GO -british gold GM -nero/gunmetal



### COMPLEMENTS

#### Bocca lavabo incasso a parete P 200 mm

Wall mount sink spout, concealed valve not included P 200 mm.  
 Wandauslauf - Ausladung 200 mm  
 Lavabo boca empotrado pared, cuerpo empotrado no incluido P 200 mm.  
 Bec encastré mural pour lavabo, sans corps d'encastrement P 200 mm.



RA -rame/copper bronze GO -british gold GM -nero/gunmetal

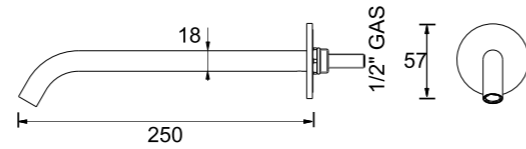
IT	DE	EN	F
SA = Satinato	SA = Satiniert	SA = Satin	SA = Satinée
LU = Lucido	LU = Glaenzend	LU = Polished	LU = Poli
PVD = Colori speciali	PVD = Sonderfarben	PVD = Special colour	PVD = Couleurs spéciales

IT	DE	EN	F
SA = Satinato	SA = Satiniert	SA = Satin	SA = Satinée
LU = Lucido	LU = Glaenzend	LU = Polished	LU = Poli
PVD = Colori speciali	PVD = Sonderfarben	PVD = Special colour	PVD = Couleurs spéciales

### COMPLEMENTS

#### Bocca lavabo incasso a parete P 250 mm

Wall mount sink spout, concealed valve not included P 250 mm.  
Wandauslauf - Ausladung 250 mm  
Lavabo boca empotrado pared, cuerpo empotrado no incluido P 250 mm.  
Bec encastré mural pour lavabo, sans corps d'encastrement P 250 mm.

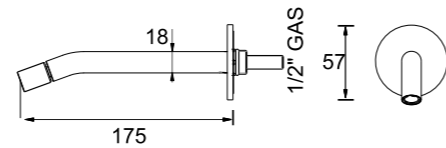


RA -rame/copper bronze GO -british gold GM -nero/gunmetal

### COMPLEMENTS

#### Bocca a parete con erogazione orientabile P 175 mm

Wall mounted adjustable spout P 175 mm.  
Wandauslauf - Ausladung 175 mm  
Caño a mural orientable P 175 mm.  
Bec mural orientable P 175 mm.

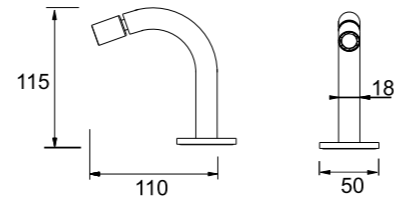


RA -rame/copper bronze GO -british gold GM -nero/gunmetal

### COMPLEMENTS

#### Bocca erogazione orientabile da piano H 115 mm

Deck mounted adjustable spout H 115 mm.  
Beweglicher Platteeinbau Auslauf H 115 mm.  
Caño orientable de repisa H 115 mm.  
Bec orientable sur plan H 115 mm.

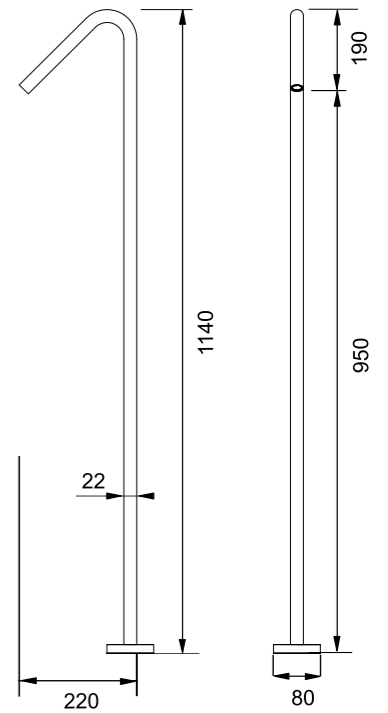


RA -rame/copper bronze GO -british gold GM -nero/gunmetal

### COMPLEMENTS

#### Canna erogazione lavabo da terra forma a cigno H 1140 mm

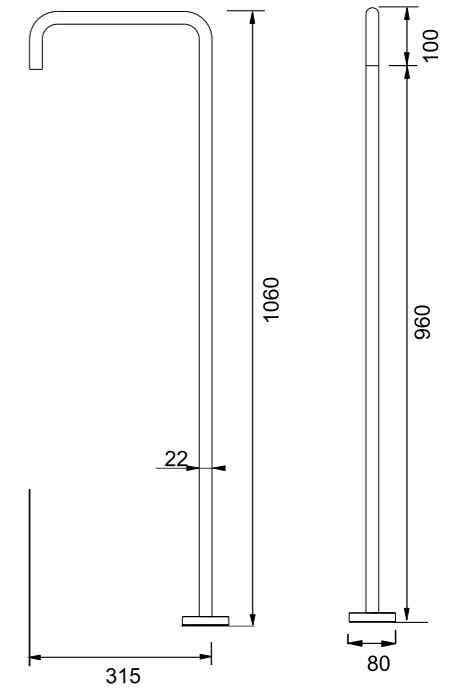
Freestanding sink - tub spout H 1140 mm  
Schwanenhalsfoermiger freistehender Auslauf H 1140 mm - Ausladung 220 mm  
Caño a suelo para lavabo - bañera H 1140 mm  
Bec d'écoulement au sol pour lavabo - baignoire H 1140 mm



### COMPLEMENTS

#### Canna erogazione lavabo da terra forma quadra H 1060 mm

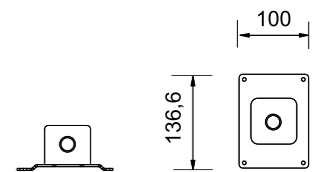
Freestanding sink spout H 1060 mm  
U-foermiger freistehender Auslauf H 1060 mm - Ausladung 315 mm  
Caño a suelo para lavabo H 1060 mm  
Bec d'écoulement au sol pour lavabo H 1060 mm



### COMPLEMENTS

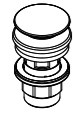
#### Corpo incasso bocche lavabo/bidet/vasca a parete

Concealed valve basin - bidet - tub for wall mount spout.  
Unterputz-Einbauteil f. Wandauslauf mit Befestigungsplatte  
Cuerpo empotrado caño de lavabo - bidé - bañera a pared  
Corps encastré bouches lavabo - bidet - baignoire à mur



IT SA = Satinato LU = Lucido PVD = Colori speciali  
DE SA = Satiniert LU = Glänzend PVD = Sonderfarben  
EN SA = Satin LU = Polished PVD = Special colour  
F SA = Satiniert LU = Poli PVD = Couleurs spéciales

IT SA = Satinato LU = Lucido PVD = Colori speciali  
DE SA = Satiniert LU = Glänzend PVD = Sonderfarben  
EN SA = Satin LU = Polished PVD = Special colour  
F SA = Satiniert LU = Poli PVD = Couleurs spéciales



### COMPLEMENTS

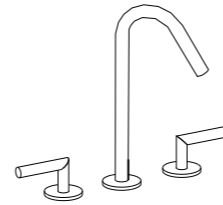
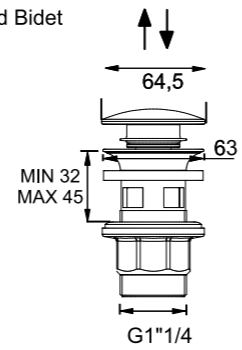
#### Piletta chiusura a pressione in ABS con rivestimento coperchio in acciaio inox

Drain pipe fitting with pressure plug in ABS finished in stainless steel.

Push-Up Ablaufgarnitur aus ABS (Edelstahloptik oder Hockglanzchrom-Optik) f. Waschbecken und Bidet

Válvula de desague a presión clik-clak en ABS, acabado en cromo brillo o acero satinado

Raccord complet avec vidage à pression clik-clak en ABS chromé brillant ou acier satiné



### COMPLEMENTS

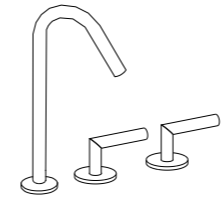
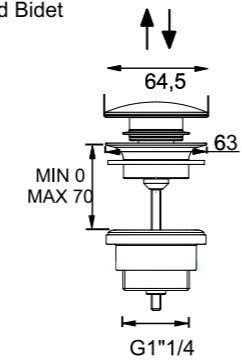
#### Piletta chiusura a pressione in ABS con rivestimento coperchio in acciaio inox

Drain pipe fitting with pressure plug in ABS finished in stainless steel.

Push-Up Ablaufgarnitur aus ABS (Edelstahloptik oder Hockglanzchrom-Optik) f. Waschbecken und Bidet

Válvula de desague a presión clik-clak en ABS, acabado en cromo brillo o acero satinado

Raccord complet avec vidage à pression clik-clak en ABS chromé brillant ou acier satiné



### COMPLEMENTS

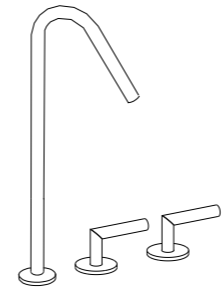
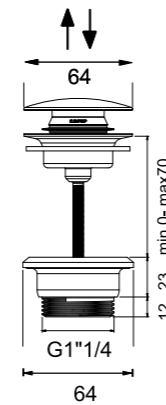
#### Piletta chiusura a pressione totalmente in acciaio inox

Drain pipe fitting with pressure plug in stainless steel.

Ablaufventil mit Klickverschluss für Waschbecken und Bidet. Stöpsel und Körper aus Edelstahl AISI 316.

Válvula de desague a presión clik-clak en acero.

Raccord complet avec vidage à pression clik-clak en acier.



RA -rame/copper bronze GO -british gold GM -nero/gunmetal

### LQ

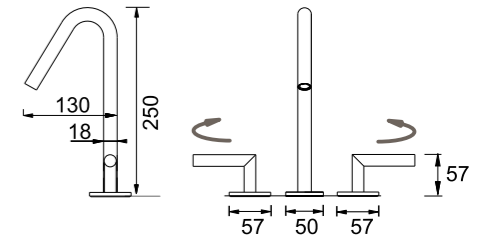
#### Gruppo 3 fori da piano per lavabo con erogazione e rubinetti acqua calda e fredda

Three-hole sink mixer complete with spout and command handles for hot and cold water.

3-Bohrung-Aufsatzbatterie für Becken mit Auslauf und Zweigriffmischer.

Bateria de superficie 3 taladros para lavabo con caño y mando para agua fría y caliente.

Batterie 3 trous pour lavabo avec bec d'écoulement et commandes eau chaude/eau froide.



RA -rame/copper bronze GO -british gold GM -nero/gunmetal

### LQ

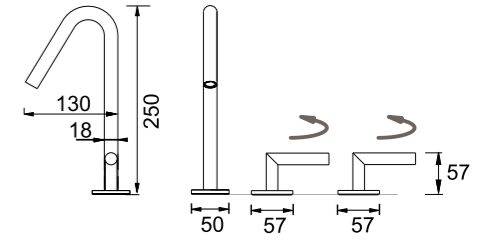
#### Gruppo 3 fori da piano per lavabo con erogazione e rubinetti acqua calda e fredda

Three-hole sink mixer complete with spout and command handles for hot and cold water.

3-Bohrung-Aufsatzbatterie für Becken mit Auslauf und Zweigriffmischer.

Bateria de superficie 3 taladros para lavabo con caño y mando para agua fría y caliente.

Batterie 3 trous pour lavabo avec bec d'écoulement et commandes eau chaude/eau froide.



RA -rame/copper bronze GO -british gold GM -nero/gunmetal

### LQ

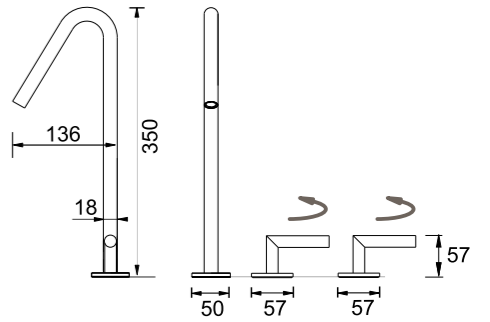
#### Gruppo 3 fori da piano per lavabo con erogazione e rubinetti acqua calda e fredda

Three-hole sink mixer complete with spout and command handles for hot and cold water.

3-Bohrung-Aufsatzbatterie für Becken mit Auslauf und Zweigriffmischer.

Bateria de superficie 3 taladros para lavabo con caño y mando para agua fría y caliente.

Batterie 3 trous pour lavabo avec bec et commandes eau chaude/eau froide.



RA -rame/copper bronze GO -british gold GM -nero/gunmetal

### LQ

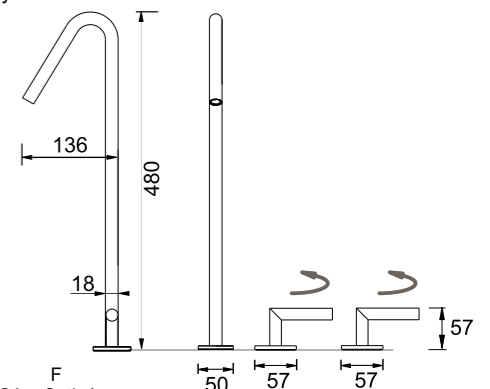
#### Gruppo 3 fori da piano per lavabo con erogazione e rubinetti acqua calda e fredda

Three-hole sink mixer complete with spout and command handles for hot and cold water.

3-Bohrung-Aufsatzbatterie für Becken mit Auslauf und Zweigriffmischer.

Bateria de superficie 3 taladros para lavabo con caño y mando para agua fría y caliente.

Batterie 3 trous pour lavabo avec bec et commandes eau chaude/eau froide.

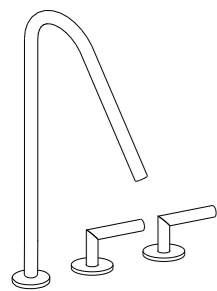


RA -rame/copper bronze GO -british gold GM -nero/gunmetal

IT	DE	EN	F
SA = Satinato	SA = Satiniert	SA = Satin	SA = Satinée
LU = Lucido	LU = Glänzend	LU = Polished	LU = Poli
PVD = Colori speciali	PVD = Sonderfarben	PVD = Special colour	PVD = Couleurs spéciales

IT	DE	EN	F
SA = Satinato	SA = Satiniert	SA = Satin	SA = Satinée
LU = Lucido	LU = Glänzend	LU = Polished	LU = Poli
PVD = Colori speciali	PVD = Sonderfarben	PVD = Special colour	PVD = Couleurs spéciales

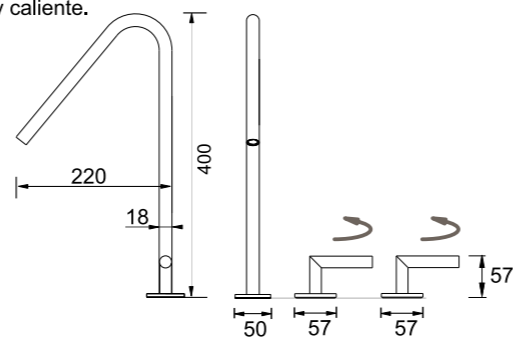




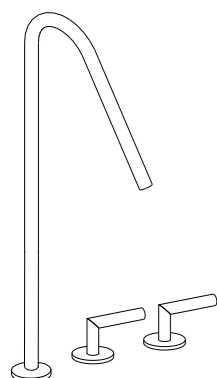
LQ

**Gruppo 3 fori da piano per lavabo con erogazione e rubinetti acqua calda e fredda**

Three-hole sink mixer complete with spout and command handles for hot and cold water.  
3-Bohrung-Aufsatzbatterie für Becken mit Auslauf und Zweigriffmischer.  
Bateria de superficie 3 taladros para lavabo con caño y mando para agua fría y caliente.  
Batterie 3 trous pour lavabo avec bec et commandes eau chaude/eau froide.



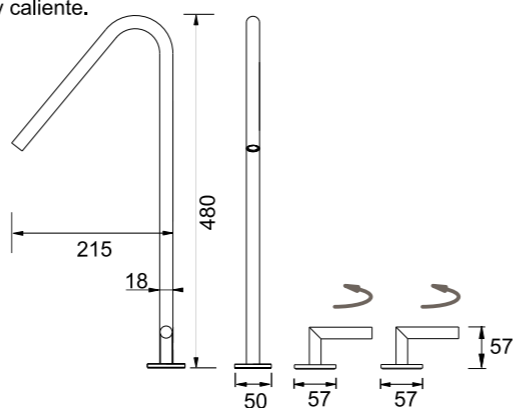
RA -rame/copper bronze GO -british gold GM -nero/gunmetal



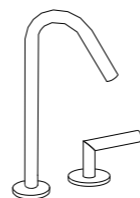
LQ

**Gruppo 3 fori da piano per lavabo con erogazione e rubinetti acqua calda e fredda**

Three-hole sink mixer complete with spout and command handles for hot and cold water.  
3-Bohrung-Aufsatzbatterie für Becken mit Auslauf und Zweigriffmischer.  
Bateria de superficie 3 taladros para lavabo con caño y mando para agua fría y caliente.  
Batterie 3 trous pour lavabo avec bec et commandes eau chaude/eau froide.



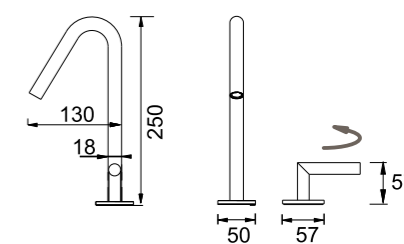
RA -rame/copper bronze GO -british gold GM -nero/gunmetal



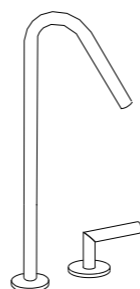
LQ

**Miscelatore idroprogressivo 2 fori con bocca erogazione**

Two-hole hydroprogressive mixer with spout.  
Hydroprogressiver Zweilocharmatur Mischer mit Auslauf.  
Grifo hidroprogresivo con 2 orificios y caño.  
Mitigeur hydroprogressif 2 trous avec bec.



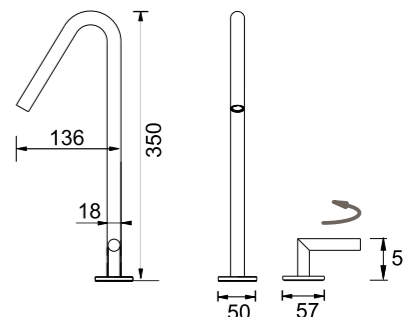
RA -rame/copper bronze GO -british gold GM -nero/gunmetal



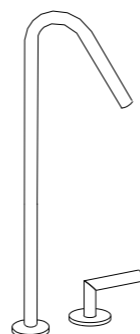
LQ

**Miscelatore idroprogressivo 2 fori con bocca erogazione**

Two-hole hydroprogressive mixer with spout.  
Hydroprogressiver Zweilocharmatur Mischer mit Auslauf.  
Grifo hidroprogresivo con 2 orificios y caño.  
Mitigeur hydroprogressif 2 trous avec bec.



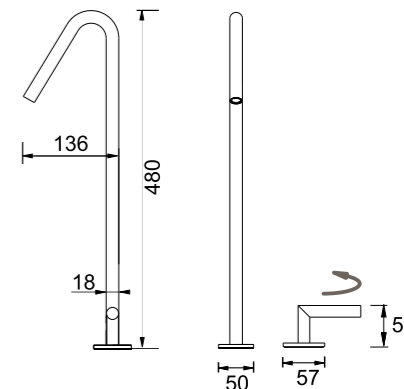
RA -rame/copper bronze GO -british gold GM -nero/gunmetal



LQ

**Miscelatore idroprogressivo 2 fori con bocca erogazione**

Two-hole hydroprogressive mixer with spout.  
Hydroprogressiver Zweilocharmatur Mischer mit Auslauf.  
Grifo hidroprogresivo con 2 orificios y caño.  
Mitigeur hydroprogressif 2 trous avec bec.



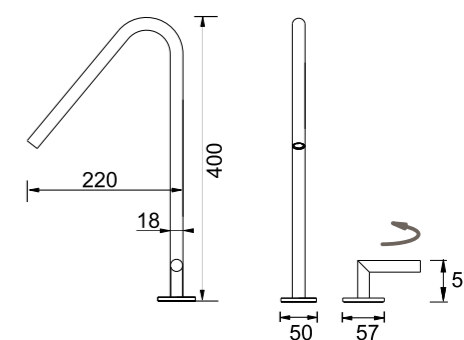
RA -rame/copper bronze GO -british gold GM -nero/gunmetal



LQ

**Miscelatore idroprogressivo 2 fori con bocca erogazione**

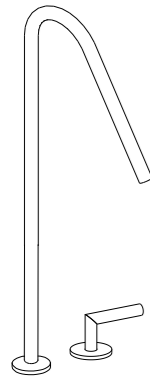
Two-hole hydroprogressive mixer with spout.  
Hydroprogressiver Zweilocharmatur Mischer mit Auslauf.  
Grifo hidroprogresivo con 2 orificios y caño.  
Mitigeur hydroprogressif 2 trous avec bec.



RA -rame/copper bronze GO -british gold GM -nero/gunmetal

IT	DE	EN	F
SA = Satinato	SA = Satiniert	SA = Satin	SA = Satinée
LU = Lucido	LU = Glänzend	LU = Polished	LU = Poli
PVD = Colori speciali	PVD = Sonderfarben	PVD = Special colour	PVD = Couleurs spéciales

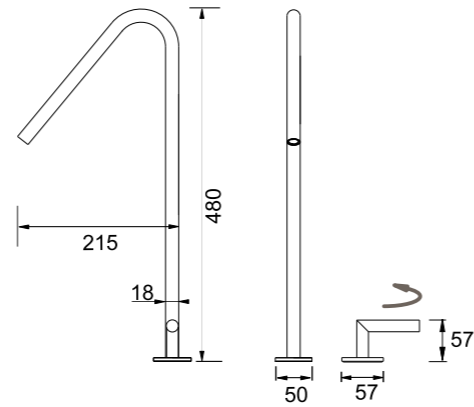
IT	DE	EN	F
SA = Satinato	SA = Satiniert	SA = Satin	SA = Satinée
LU = Lucido	LU = Glänzend	LU = Polished	LU = Poli
PVD = Colori speciali	PVD = Sonderfarben	PVD = Special colour	PVD = Couleurs spéciales



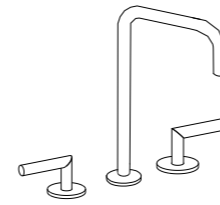
**LQ**

**Miscelatore idroprogressivo 2 fori con bocca erogazione**

Two-hole hydroprogressive mixer with spout.  
Hydroprogressiver Zweilocharmatur Mischer mit Auslauf.  
Grifo hidroprogresivo con 2 orificios y caño.  
Mitigeur hydroprogressif 2 trous avec bec.



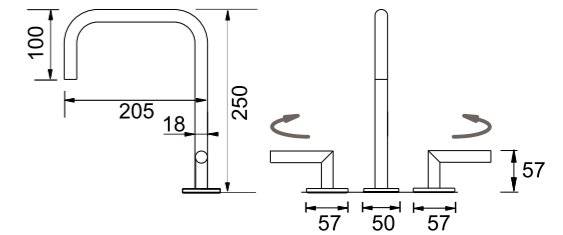
**RA** -rame/copper bronze **GO** -british gold **GM** -nero/gunmetal



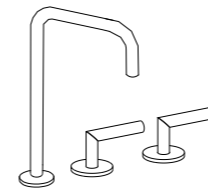
**LQ**

**Gruppo 3 fori da piano per lavabo con erogazione e rubinetti acqua calda e fredda**

Three-hole sink mixer complete with spout and command handles for hot and cold water.  
3-Bohrung-Aufsatzbatterie für Becken mit Auslauf und Zweigriffmischer.  
Bateria de superficie 3 taladros para lavabo con caño y mando para agua fría y caliente.  
Batterie 3 trous pour lavabo avec bec d'écoulement et commandes eau chaude/eau froide.



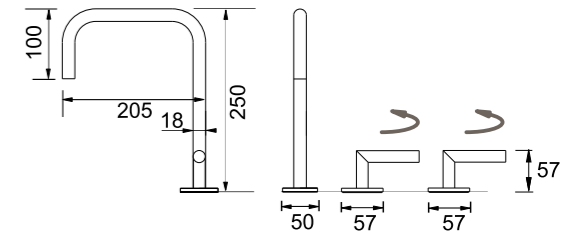
**RA** -rame/copper bronze **GO** -british gold **GM** -nero/gunmetal



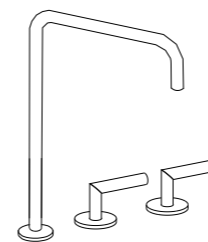
**LQ**

**Gruppo 3 fori da piano per lavabo con erogazione e rubinetti acqua calda e fredda**

Three-hole sink mixer complete with spout and command handles for hot and cold water.  
3-Bohrung-Aufsatzbatterie für Becken mit Auslauf und Zweigriffmischer.  
Bateria de superficie 3 taladros para lavabo con caño y mando para agua fría y caliente.  
Batterie 3 trous pour lavabo avec bec d'écoulement et commandes eau chaude/eau froide.



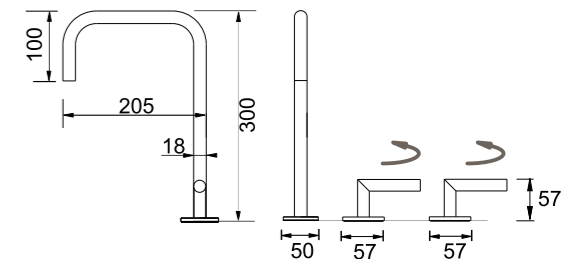
**RA** -rame/copper bronze **GO** -british gold **GM** -nero/gunmetal



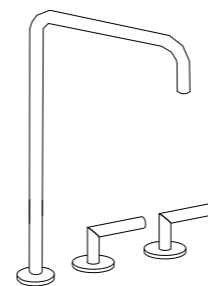
**LQ**

**Gruppo 3 fori da piano per lavabo con erogazione e rubinetti acqua calda e fredda**

Three-hole sink mixer complete with spout and command handles for hot and cold water.  
3-Bohrung-Aufsatzbatterie für Becken mit Auslauf und Zweigriffmischer.  
Bateria de superficie 3 taladros para lavabo con caño y mando para agua fría y caliente.  
Batterie 3 trous pour lavabo avec bec d'écoulement et commandes eau chaude/eau froide.



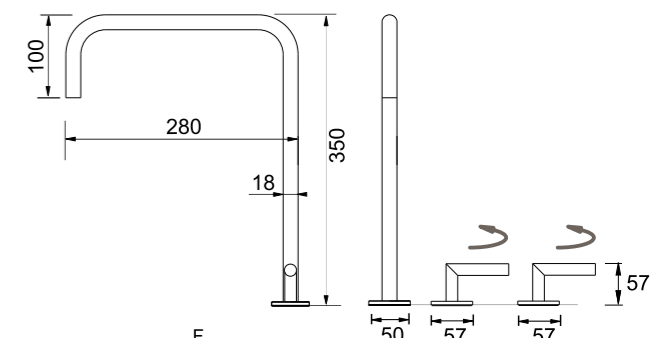
**RA** -rame/copper bronze **GO** -british gold **GM** -nero/gunmetal



**LQ**

**Gruppo 3 fori da piano per lavabo con erogazione e rubinetti acqua calda e fredda**

Three-hole sink mixer complete with spout and command handles for hot and cold water.  
3-Bohrung-Aufsatzbatterie für Becken mit Auslauf und Zweigriffmischer.  
Bateria de superficie para lavabo con caño y mando para agua fría y caliente.  
Batterie pour lavabo avec bec et commandes eau chaude/eau froide.



**RA** -rame/copper bronze **GO** -british gold **GM** -nero/gunmetal

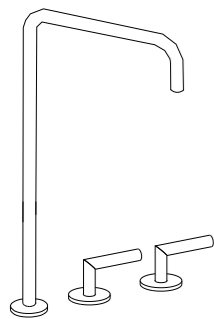
IT	DE	EN	F
SA = Satinato	SA = Satiniert	SA = Satin	SA = Satinée
LU = Lucido	LU = Glänzend	LU = Polished	LU = Poli
PVD = Colori speciali	PVD = Sonderfarben	PVD = Special colour	PVD = Couleurs spéciales

IT	DE	EN	F
SA = Satinato	SA = Satiniert	SA = Satin	SA = Satinée
LU = Lucido	LU = Glänzend	LU = Polished	LU = Poli
PVD = Colori speciali	PVD = Sonderfarben	PVD = Special colour	PVD = Couleurs spéciales

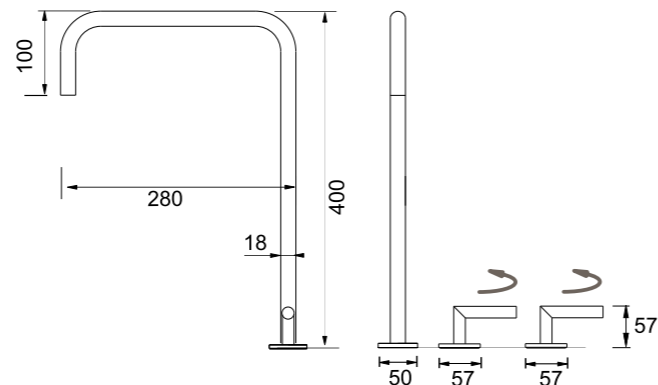
LQ

Gruppo 3 fori da piano per lavabo con erogazione e rubinetti acqua calda e fredda

Three-hole sink mixer complete with spout and command handles for hot and cold water.
3-Bohrung-Aufsatzbatterie für Becken mit Auslauf und Zweigriffmischer.
Bateria de superficie 3 taladros para lavabo con caño y mando para agua fría y caliente.
Batterie 3 trous pour lavabo avec bec et commandes eau chaude/eau froide.



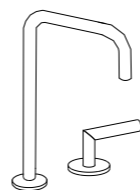
RA -rame/copper bronze GO -british gold GM -nero/gunmetal



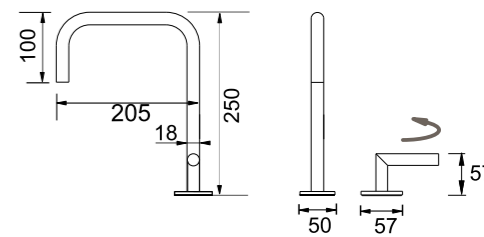
LQ

Miscelatore idroprogressivo 2 fori con bocca erogazione

Two-hole hydroprogressive mixer with spout.
Hydroprogressiver Zweilocharmatur Mischer mit Auslauf.
Grifo hidroprogressivo con 2 orificios y caño.
Mitigeur hydroprogressif 2 trous avec bec.



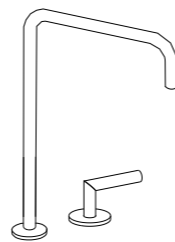
RA -rame/copper bronze GO -british gold GM -nero/gunmetal



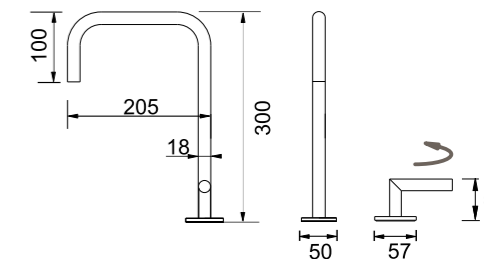
LQ

Miscelatore idroprogressivo 2 fori con bocca erogazione

Two-hole hydroprogressive mixer with spout.
Hydroprogressiver Zweilocharmatur Mischer mit Auslauf.
Mezclador hidroprogressivo con 2 orificios y caño.
Mitigeur hydroprogressif 2 trous avec bec.



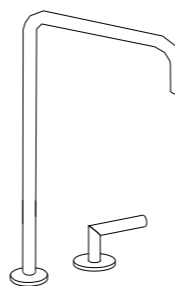
RA -rame/copper bronze GO -british gold GM -nero/gunmetal



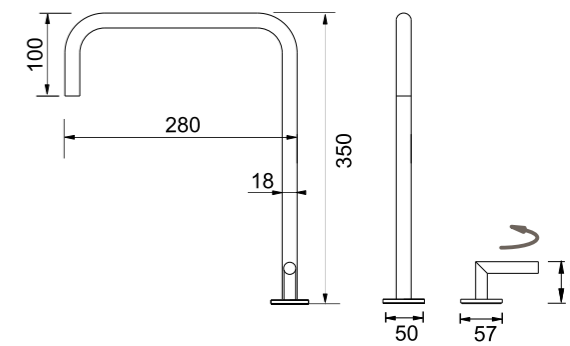
LQ

Miscelatore idroprogressivo 2 fori con bocca erogazione

Two-hole hydroprogressive mixer with spout.
Hydroprogressiver Zweilocharmatur Mischer mit Auslauf.
Mezclador hidroprogressivo con 2 orificios y caño.
Mitigeur hydroprogressif 2 trous avec bec.



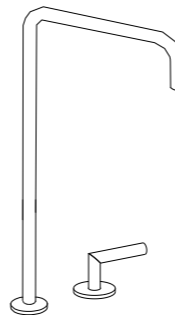
RA -rame/copper bronze GO -british gold GM -nero/gunmetal



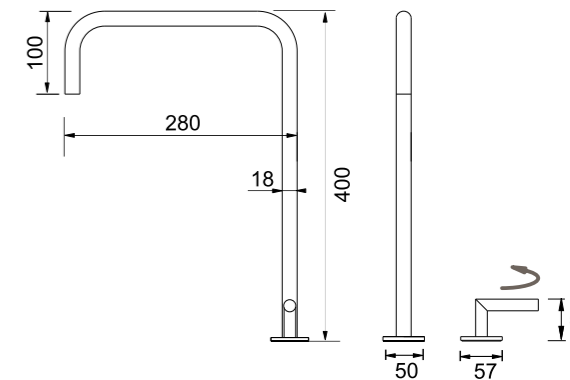
LQ

Miscelatore idroprogressivo 2 fori con bocca erogazione

Two-hole hydroprogressive mixer with spout.
Hydroprogressiver Zweilocharmatur Mischer mit Auslauf.
Mezclador hidroprogressivo con 2 orificios y caño.
Mitigeur hydroprogressif 2 trous avec bec.

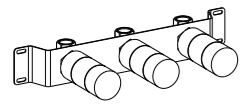


RA -rame/copper bronze GO -british gold GM -nero/gunmetal



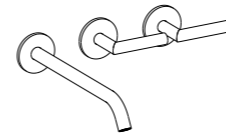
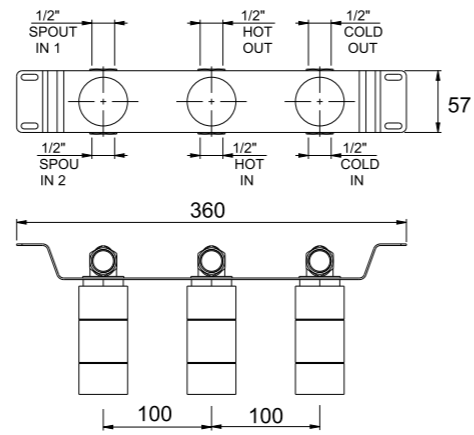
IT SA = Satinato LU = Lucido PVD = Colori speciali
DE SA = Satiniert LU = Glanzend PVD = Sonderfarben
EN SA = Satin LU = Polished PVD = Special colour
F SA = Satinée LU = Poli PVD = Couleurs spéciales

IT SA = Satinato LU = Lucido PVD = Colori speciali
DE SA = Satiniert LU = Glanzend PVD = Sonderfarben
EN SA = Satin LU = Polished PVD = Special colour
F SA = Satinée LU = Poli PVD = Couleurs spéciales



**LQ**

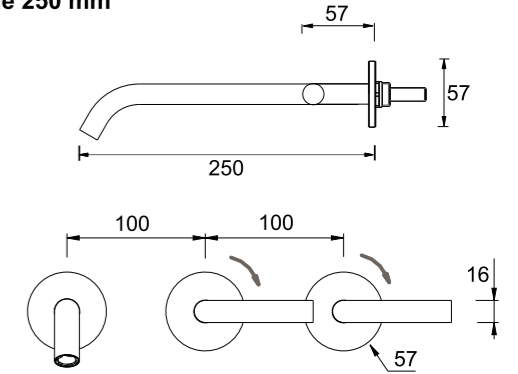
**Corpo ad incasso per art. LE300/13-16-20-25**  
 Concealed valve for art. LE300/13-16-20-25.  
 Unterputzteil zu art. LE300/13-16-20-25.  
 Mecanismo empotrado para art. LE300/13-16-20-25.  
 Corps d'encastrement pour art. LE300/13-16-20-25.



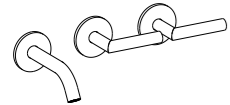
**LQ**

**Gruppo 2 rubinetti apri/chiodi a parete con bocca di erogazione 250 mm**

Wall mounted set of 2 individual taps with spout 250 mm.  
 Zweigriff Wandarmatur mit Auslauf 250 mm.  
 Grupo griferia mural con dos llaves individuales y caño 250 mm.  
 Mélangeur mural avec bec 250 mm.



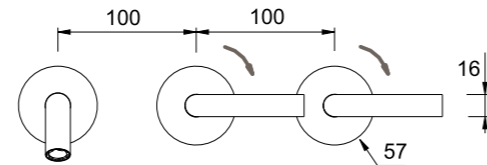
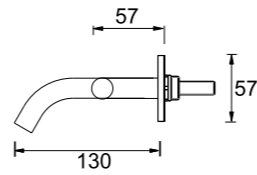
**RA** -rame/copper bronze **GO** -british gold **GM** -nero/gunmetal



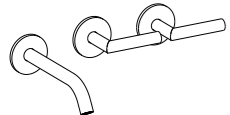
**LQ**

**Gruppo 2 rubinetti apri/chiodi a parete con bocca di erogazione 130 mm**

Wall mounted set of 2 individual taps with spout 130 mm.  
 Zweigriff Wandarmatur mit Auslauf 130 mm.  
 Grupo griferia mural con dos llaves individuales y caño 130 mm.  
 Mélangeur mural avec bec 130 mm.



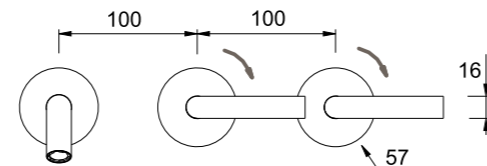
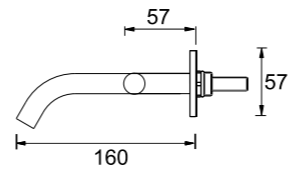
**RA** -rame/copper bronze **GO** -british gold **GM** -nero/gunmetal



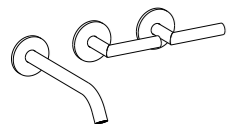
**LQ**

**Gruppo 2 rubinetti apri/chiodi a parete con bocca di erogazione 160 mm**

Wall mounted set of 2 individual taps with spout 160 mm.  
 Zweigriff Wandarmatur mit Auslauf 160 mm.  
 Grupo griferia mural con dos llaves individuales y caño 160 mm.  
 Mélangeur mural avec bec 160 mm.



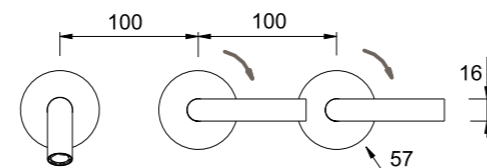
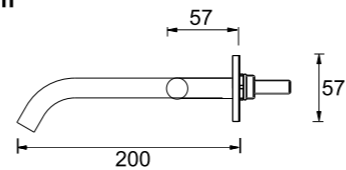
**RA** -rame/copper bronze **GO** -british gold **GM** -nero/gunmetal



**LQ**

**Gruppo 2 rubinetti apri/chiodi a parete con bocca di erogazione 200 mm**

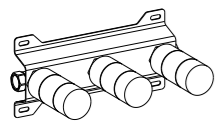
Wall mounted set of 2 individual taps with spout 200 mm.  
 Zweigriff Wandarmatur mit Auslauf 200 mm.  
 Grupo griferia mural con dos llaves individuales y caño 200 mm.  
 Mélangeur mural avec bec 200 mm.



**RA** -rame/copper bronze **GO** -british gold **GM** -nero/gunmetal

IT	DE	EN	F
SA = Satinato	SA = Satiniert	SA = Satin	SA = Satinée
LU = Lucido	LU = Glaenzend	LU = Polished	LU = Poli
PVD = Colori speciali	PVD = Sonderfarben	PVD = Special colour	PVD = Couleurs spéciales

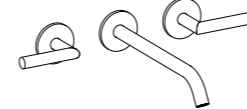
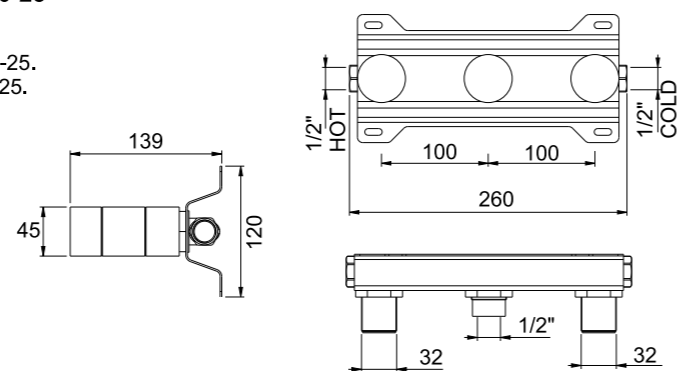
IT	DE	EN	F
SA = Satinato	SA = Satiniert	SA = Satin	SA = Satinée
LU = Lucido	LU = Glaenzend	LU = Polished	LU = Poli
PVD = Colori speciali	PVD = Sonderfarben	PVD = Special colour	PVD = Couleurs spéciales



**LQ**

**Corpo ad incasso per art. LE310/8-13-16-20-25**

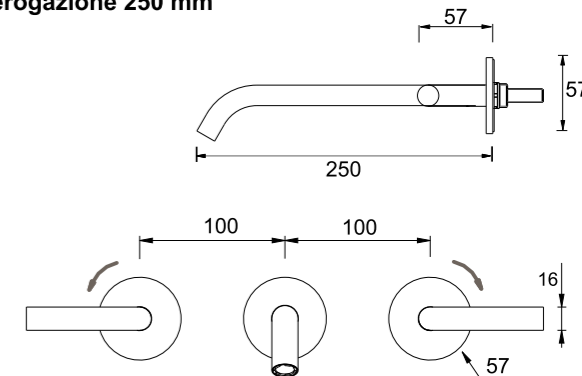
Concealed valve for art. LE310/8-13-16-20-25.  
 Unterputzteil zu art. LE310/8-13-16-20-25.  
 Mecanismo empotrado para art. LE310/8-13-16-20-25.  
 Corps d'encastrement pour art. LE310/8-13-16-20-25.



**LQ**

**Gruppo 2 rubinetti apri/chiodi a parete con bocca di erogazione 250 mm**

Wall mounted set of 2 individual taps with spout 250 mm.  
 Zweigriff Wandarmatur mit Auslauf 250 mm.  
 Grupo griferia mural con dos llaves individuales y caño 250 mm.  
 Mélangeur mural avec bec 250 mm.

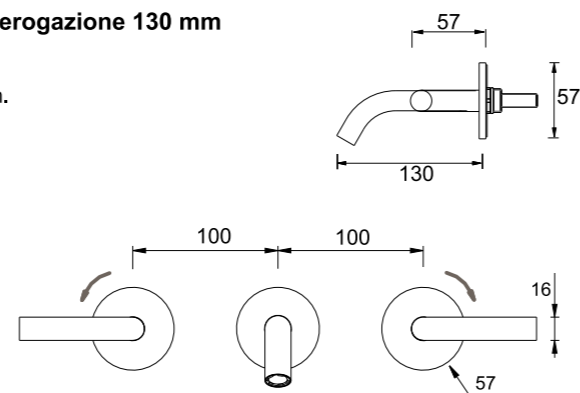


**RA** -rame/copper bronze **GO** -british gold **GM** -nero/gunmetal

**LQ**

**Gruppo 2 rubinetti apri/chiodi a parete con bocca di erogazione 130 mm**

Wall mounted set of 2 individual taps with spout 130 mm.  
 Zweigriff Wandarmatur mit Auslauf 130 mm.  
 Grupo griferia mural con dos llaves individuales y caño 130 mm.  
 Mélangeur mural avec bec 130 mm.

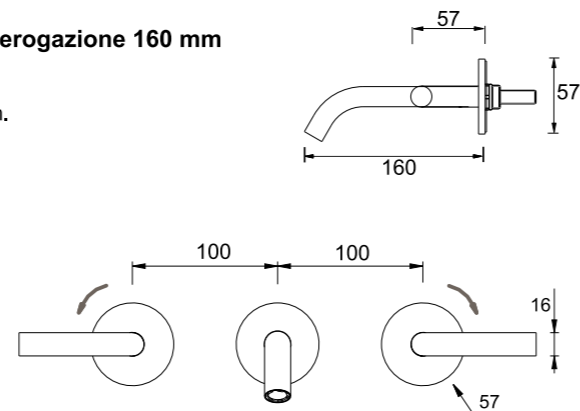


**RA** -rame/copper bronze **GO** -british gold **GM** -nero/gunmetal

**LQ**

**Gruppo 2 rubinetti apri/chiodi a parete con bocca di erogazione 160 mm**

Wall mounted set of 2 individual taps with spout 160 mm.  
 Zweigriff Wandarmatur mit Auslauf 160 mm.  
 Grupo griferia mural con dos llaves individuales y caño 160 mm.  
 Mélangeur mural avec bec 160 mm.

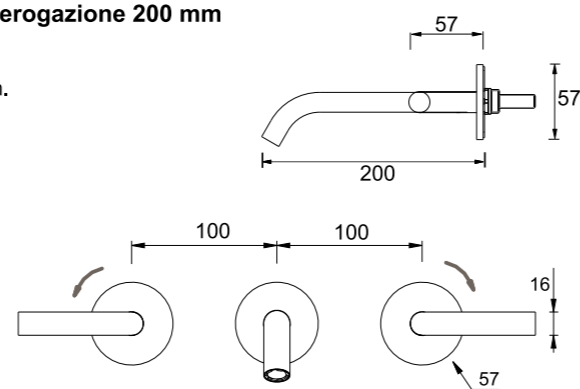
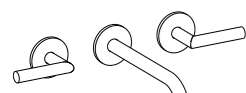


**RA** -rame/copper bronze **GO** -british gold **GM** -nero/gunmetal

**LQ**

**Gruppo 2 rubinetti apri/chiodi a parete con bocca di erogazione 200 mm**

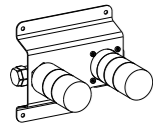
Wall mounted set of 2 individual taps with spout 200 mm.  
 Zweigriff Wandarmatur mit Auslauf 200 mm.  
 Grupo griferia mural con dos llaves individuales y caño 200 mm.  
 Mélangeur mural avec bec 200 mm.



**RA** -rame/copper bronze **GO** -british gold **GM** -nero/gunmetal

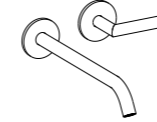
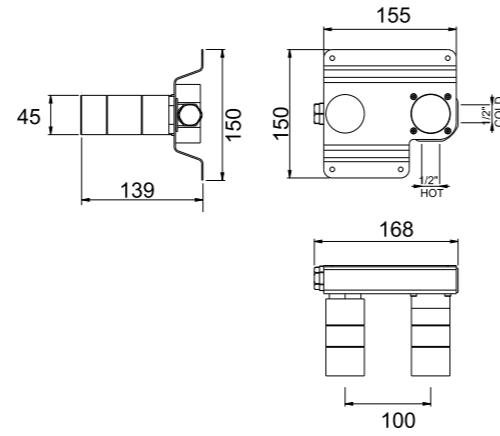
IT	DE	EN	F
SA = Satinato	SA = Satiniert	SA = Satin	SA = Satinée
LU = Lucido	LU = Glaenzend	LU = Polished	LU = Poli
PVD = Colori speciali	PVD = Sonderfarben	PVD = Special colour	PVD = Couleurs spéciales

IT	DE	EN	F
SA = Satinato	SA = Satiniert	SA = Satin	SA = Satinée
LU = Lucido	LU = Glaenzend	LU = Polished	LU = Poli
PVD = Colori speciali	PVD = Sonderfarben	PVD = Special colour	PVD = Couleurs spéciales



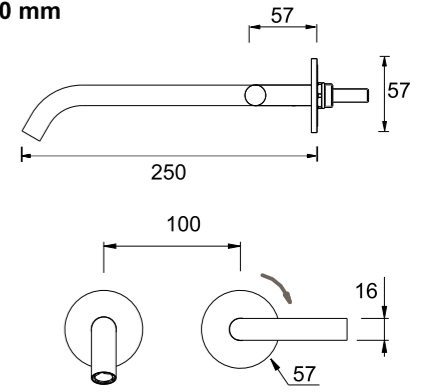
**LQ**

**Corpo ad incasso per art. LE320/13-16-20-25**  
 Concealed valve for art. LE320/13-16-20-25.  
 Unterputzteil zu art. LE320/13-16-20-25.  
 Mecanismo empotrado para art. LE320/13-16-20-25.  
 Corps d'encastrement pour art. LE320/13-16-20-25.

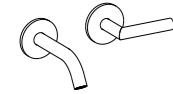


**LQ**

**Miscelatore idroprogressivo a parete con bocca di erogazione 250 mm**  
 Wall mounted hydroprogressive mixer with spout 250 mm.  
 Wandeinbau hydroprogressiver Mischer mit Auslauf 250 mm.  
 Grifo hidroprogresivo mural con caño 250 mm.  
 Mitigeur hydroprogressif mural avec bec 250 mm.

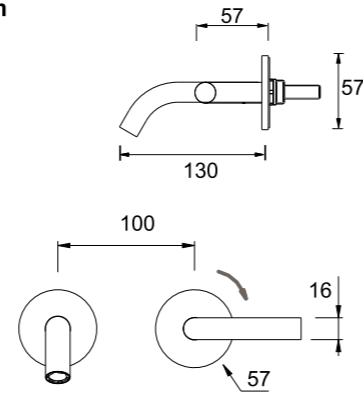


**RA** -rame/copper bronze **GO** -british gold **GM** -nero/gunmetal

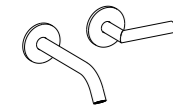


**LQ**

**Miscelatore idroprogressivo a parete con bocca di erogazione 130 mm**  
 Wall mounted hydroprogressive mixer with spout 130 mm.  
 Wandeinbau hydroprogressiver Mischer mit Auslauf 130 mm.  
 Mezclador hidroprogresivo mural con caño 130 mm.  
 Mitigeur hydroprogressif mural avec bec 130 mm.

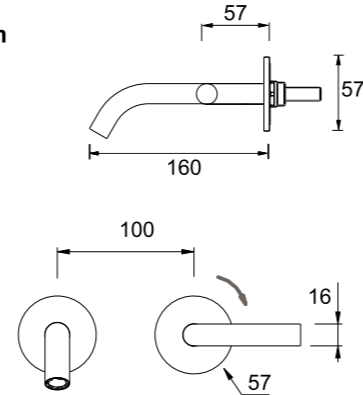


**RA** -rame/copper bronze **GO** -british gold **GM** -nero/gunmetal

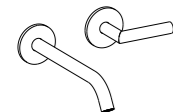


**LQ**

**Miscelatore idroprogressivo a parete con bocca di erogazione 160 mm**  
 Wall mounted hydroprogressive mixer with spout 160 mm.  
 Wandeinbau hydroprogressiver Mischer mit Auslauf 160 mm.  
 Mezclador hidroprogresivo mural con caño 160 mm.  
 Mitigeur hydroprogressif mural avec bec 160 mm.

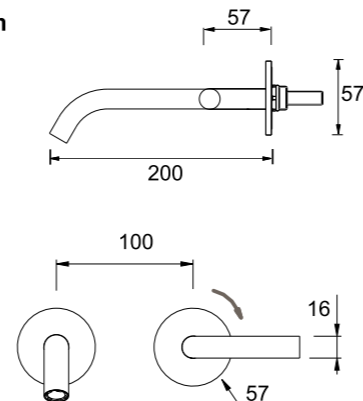


**RA** -rame/copper bronze **GO** -british gold **GM** -nero/gunmetal



**LQ**

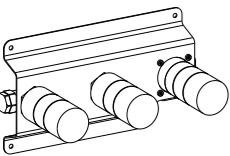
**Miscelatore idroprogressivo a parete con bocca di erogazione 200 mm**  
 Wall mounted hydroprogressive mixer with spout 200 mm.  
 Wandeinbau hydroprogressiver Mischer mit Auslauf 200 mm.  
 Mezclador hidroprogresivo mural con caño 200 mm.  
 Mitigeur hydroprogressif mural avec bec 200 mm.



**RA** -rame/copper bronze **GO** -british gold **GM** -nero/gunmetal

IT SA = Satinato LU = Lucido PVD = Colori speciali  
 DE SA = Satiniert LU = Glaenzend PVD = Sonderfarben  
 EN SA = Satin LU = Polished PVD = Special colour  
 F SA = Satinée LU = Poli PVD = Couleurs spéciales

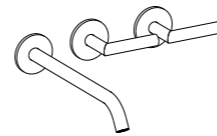
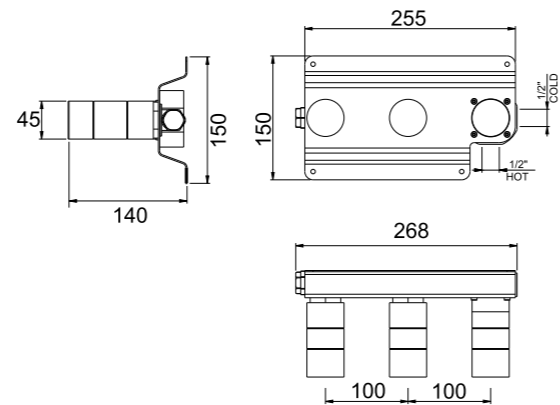
IT SA = Satinato LU = Lucido PVD = Colori speciali  
 DE SA = Satiniert LU = Glaenzend PVD = Sonderfarben  
 EN SA = Satin LU = Polished PVD = Special colour  
 F SA = Satinée LU = Poli PVD = Couleurs spéciales



**LQ**

**Corpo ad incasso per art. LE330/13-16-20-25**

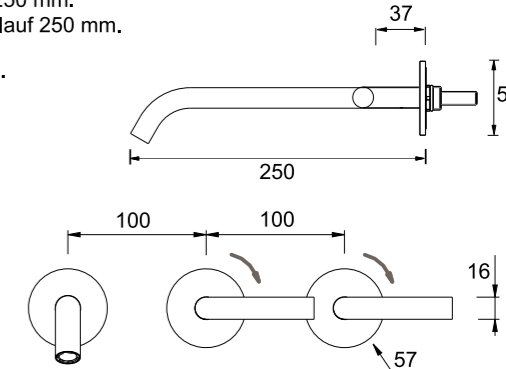
Concealed valve for art. LE330/13-16-20-25.  
 Unterputzteil zu art. LE330/13-16-20-25.  
 Mecanismo empotrado para art. LE330/13-16-20-25.  
 Corps d'encastrement pour art. LE330/13-16-20-25.



**LQ**

**Miscelatore idroprogressivo con regolatore di portata a parete e bocca di erogazione 250 mm**

Wall mounted hydroprogressive mixer with flow regulator and spout 250 mm.  
 Wandeinbau hydroprogressiver Mischer mit Durchflussregler mit Auslauf 250 mm.  
 Grifo hidroprogresivo mural con regulador de flujo e caño 250 mm.  
 Mitigeur hydroprogressif mural avec régulateur de flux e bec 250 mm.

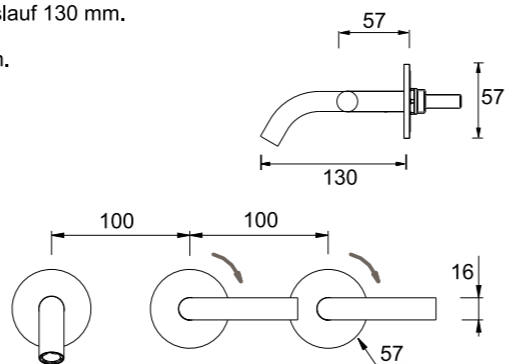
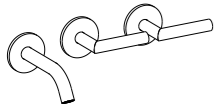


**RA** -rame/copper bronze **GO** -british gold **GM** -nero/gunmetal

**LQ**

**Miscelatore idroprogressivo con regolatore di portata a parete e bocca di erogazione 130 mm**

Wall mounted hydroprogressive mixer with flow regulator and spout 130 mm.  
 Wandeinbau hydroprogressiver Mischer mit Durchflussregler mit Auslauf 130 mm.  
 Grifo hidroprogresivo mural con regulador de flujo e caño 130 mm.  
 Mitigeur hydroprogressif mural avec régulateur de flux e bec 130 mm.

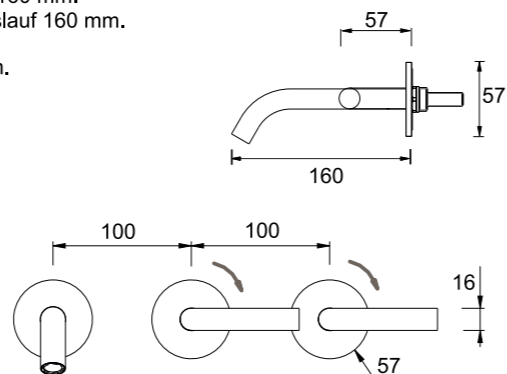
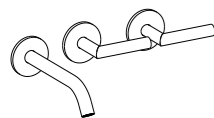


**RA** -rame/copper bronze **GO** -british gold **GM** -nero/gunmetal

**LQ**

**Miscelatore idroprogressivo con regolatore di portata a parete e bocca di erogazione 160 mm**

Wall mounted hydroprogressive mixer with flow regulator and spout 160 mm.  
 Wandeinbau hydroprogressiver Mischer mit Durchflussregler mit Auslauf 160 mm.  
 Grifo hidroprogresivo mural con regulador de flujo e caño 160 mm.  
 Mitigeur hydroprogressif mural avec régulateur de flux e bec 160 mm.

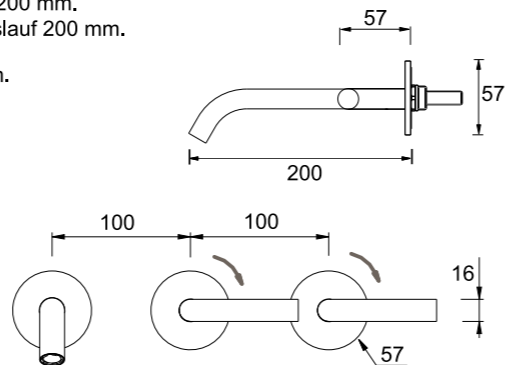
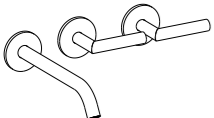


**RA** -rame/copper bronze **GO** -british gold **GM** -nero/gunmetal

**LQ**

**Miscelatore idroprogressivo con regolatore di portata a parete e bocca di erogazione 200 mm**

Wall mounted hydroprogressive mixer with flow regulator and spout 200 mm.  
 Wandeinbau hydroprogressiver Mischer mit Durchflussregler mit Auslauf 200 mm.  
 Grifo hidroprogresivo mural con regulador de flujo e caño 200 mm.  
 Mitigeur hydroprogressif mural avec régulateur de flux e bec 200 mm.



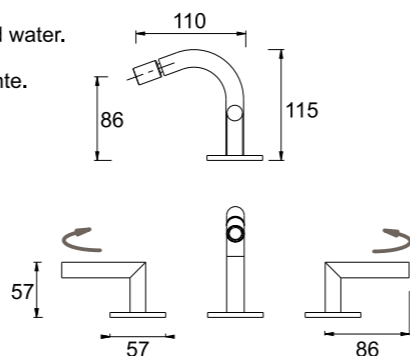
**RA** -rame/copper bronze **GO** -british gold **GM** -nero/gunmetal

IT	DE	EN	F
SA = Satinato	SA = Satiniert	SA = Satin	SA = Satinée
LU = Lucido	LU = Glaenzend	LU = Polished	LU = Poli
PVD = Colori speciali	PVD = Sonderfarben	PVD = Special colour	PVD = Couleurs spéciales

IT	DE	EN	F
SA = Satinato	SA = Satiniert	SA = Satin	SA = Satinée
LU = Lucido	LU = Glaenzend	LU = Polished	LU = Poli
PVD = Colori speciali	PVD = Sonderfarben	PVD = Special colour	PVD = Couleurs spéciales

**LQ**

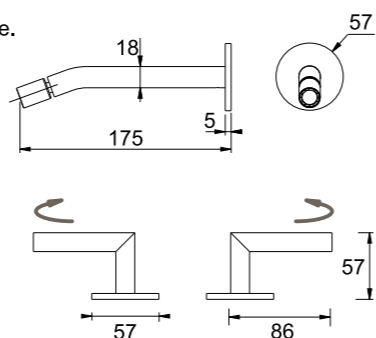
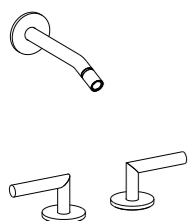
**Gruppo rubinetterie bidet appoggio tre fori acqua calda/fredda**  
 Three-hole bidet mixer complete with spout and command handles for hot and cold water.  
 3-Bohrung-Aufsatzbatterie für Becken mit Auslauf und Zweigriffmischer.  
 Bateria de superficie 3 taladros para bidé con caño y mando para agua fría y caliente.  
 Batterie 3 trous pour bidet avec bec et commandes eau chaude/eau froide.



RA -rame/copper bronze GO -british gold GM -nero/gunmetal

**LQ**

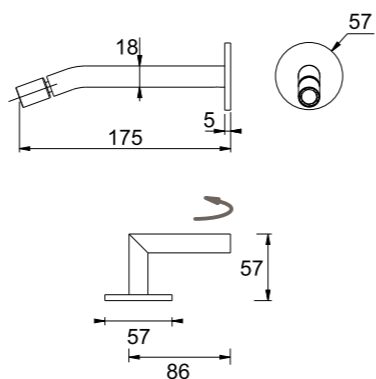
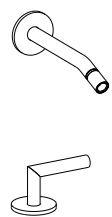
**Gruppo rubinetteria bidet acqua calda/fredda appoggio, erogazione a parete**  
 Two-hole bidet mixer complete with wall mounted spout and command handles hot/cold water.  
 2-Bohrung-Aufsatzbatterie für Becken mit Auslauf und Zweigriffmischer.  
 Bateria de superficie 2 taladros para bidé con caño y mando para agua fría y caliente.  
 Batterie 2 trous pour bidet avec bec et commandes eau chaude/eau froide.



RA -rame/copper bronze GO -british gold GM -nero/gunmetal

**LQ**

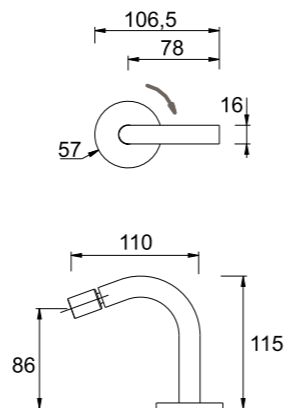
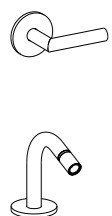
**Gruppo bidet con idroprogressivo appoggio ed erogazione a parete**  
 Kit bidet with hydroprogressive mixer and wall mounted adjustable spout.  
 Hydroprogressiver Zweilocharmatur Mischer mit Auslauf.  
 Grifo hidroprogresivo con caño mural.  
 Mitigeur hydroprogressif avec bec.



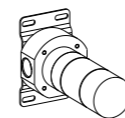
RA -rame/copper bronze GO -british gold GM -nero/gunmetal

**LQ**

**Gruppo bidet con idroprogressivo a parete ed erogazione d'appoggio**  
 Wall mounted hydroprogressive mixer with spout .  
 Wandeinbau hydroprogressiver Mischer mit Auslauf.  
 Grifo hidroprogresivo mural con caño.  
 Mitigeur hydroprogressif mural avec bec.

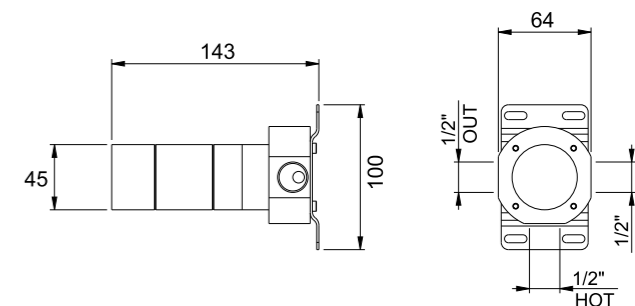


RA -rame/copper bronze GO -british gold GM -nero/gunmetal



**LQ**

**Corpo ad incasso per art. LE11**  
 Concealed valve for art. LE11.  
 Unterputzteil zu art. LE11.  
 Mecanismo empotrado para art. LE11.  
 Corps d'encastrement pour art. LE11.



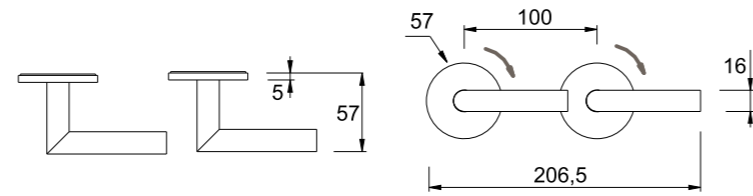
IT SA = Satinato LU = Lucido PVD = Colori speciali  
 DE SA = Satiniert LU = Glaenzend PVD = Sonderfarben  
 EN SA = Satin LU = Polished PVD = Special colour  
 F SA = Satinée LU = Poli PVD = Couleurs spéciales

IT SA = Satinato LU = Lucido PVD = Colori speciali  
 DE SA = Satiniert LU = Glaenzend PVD = Sonderfarben  
 EN SA = Satin LU = Polished PVD = Special colour  
 F SA = Satinée LU = Poli PVD = Couleurs spéciales



**LQ****Gruppo doccia/vasca, miscelatore idroprogressivo con deviatore 2 vie**

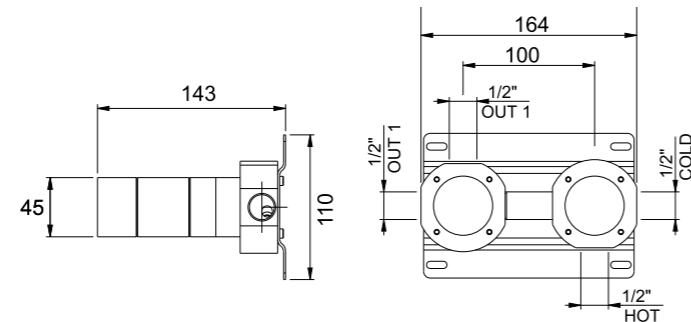
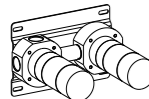
Wall mounted set hydroprogressive mixer with 2 way diverter.  
 Wandeinbau hydroprogressiver Mischer mit Umsteller (2 Wege).  
 Grifo hidroprogresivo mural con desviador de dos vias.  
 Mitigeur hydroprogressif mural avec déviateur à 2 voies.



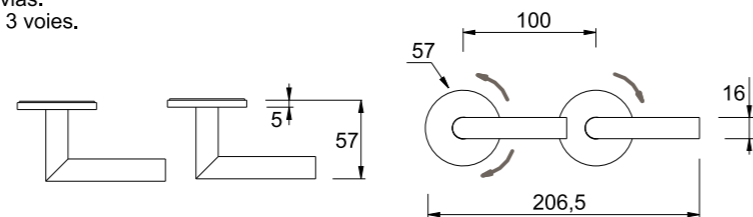
RA -rame/copper bronze GO -british gold GM -nero/gunmetal

**LQ****Corpo ad incasso per art. LE502**

Concealed valve for art. LE502.  
 Unterputzteil zu art. LE502.  
 Mecanismo empotrado para art. LE502.  
 Corps d'encastrement pour art. LE502.

**LQ****Gruppo doccia/vasca, miscelatore idroprogressivo con deviatore 3 vie**

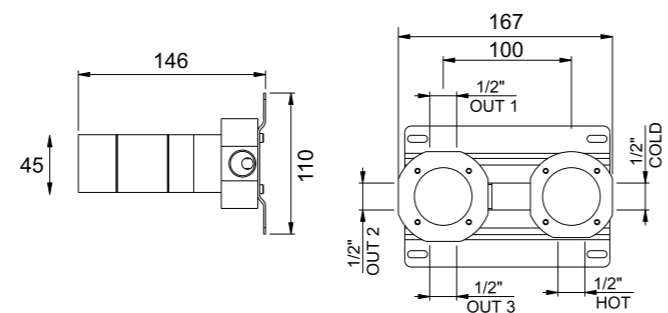
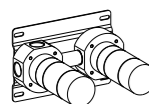
Wall mounted set hydroprogressive mixer with 3 way diverter.  
 Wandeinbau hydroprogressiver Mischer mit Umsteller (3 Wege).  
 Grifo hidroprogresivo mural con desviador de 3 vias.  
 Mitigeur hydroprogressif mural avec déviateur à 3 voies.



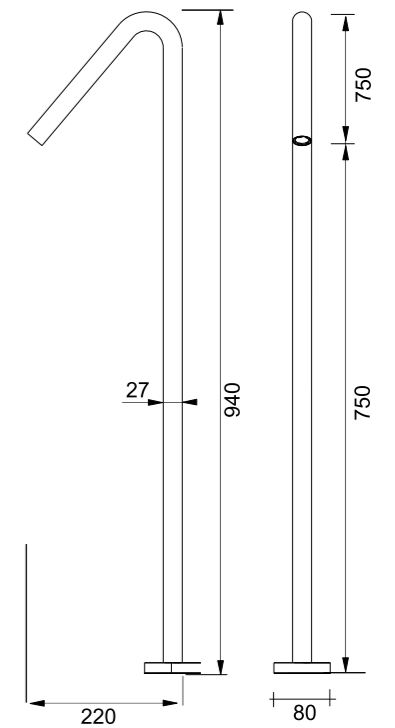
RA -rame/copper bronze GO -british gold GM -nero/gunmetal

**LQ****Corpo ad incasso per art. LE503**

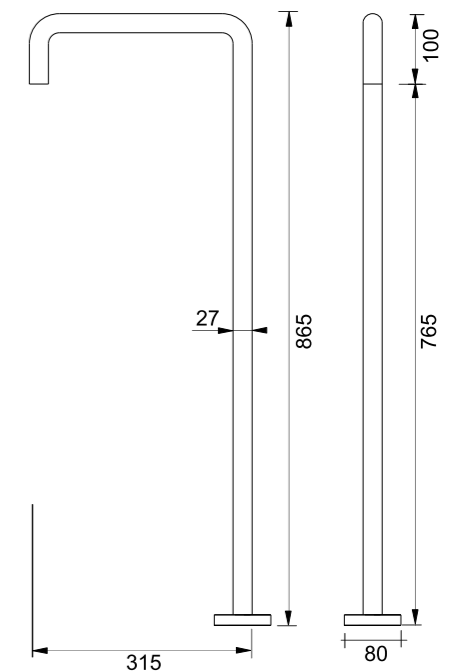
Concealed valve for art. LE503.  
 Unterputzteil zu art. LE503.  
 Mecanismo empotrado para art. LE503.  
 Corps d'encastrement pour art. LE503.

**COMPLEMENTS****Canna erogazione vasca da pavimento forma a cigno H 940 mm**

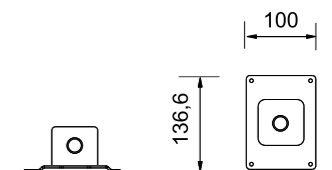
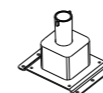
Cane bathtub floor swan shape H 940 mm  
 Schwanenhalsfoermiger freistehender Auslauf H 940 mm Durchm. 27 mm  
 Caño de bañera suelo forma de cisne H 940 mm  
 Roseau baignoire sol en forme de cygne H 940 mm

**COMPLEMENTS****Canna erogazione vasca da pavimento forma quadra H 865 mm**

Cane bathtub floor square shape H 865 mm  
 U-foermiger freistehender Auslauf H 865 mm Durchm.  
 Caño de bañera suelo forma cuadrada H 865 mm  
 Roseau baignoire sol forme carrée H 865 mm

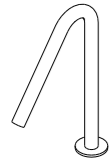
**COMPLEMENTS****Corpo incasso bocche lavabo/bidet/vasca a parete**

Concealed valve basin - bidet - tub for wall mount spout.  
 Unterputz-Einbauteil f. Wandauslauf mit Befestigungsplatte  
 Cuerpo empotrado caño de lavabo - bidé - bañera a pared  
 Corps encastré bouches lavabo - bidet - baignoire à mur



IT	DE	EN	F
SA = Satinato	SA = Satiniert	SA = Satin	SA = Satinée
LU = Lucido	LU = Glaenzend	LU = Polished	LU = Poli
PVD = Colori speciali	PVD = Sonderfarben	PVD = Special colour	PVD = Couleurs spéciales

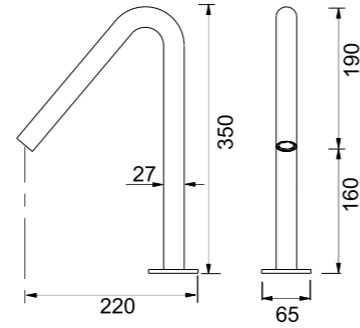
IT	DE	EN	F
SA = Satinato	SA = Satiniert	SA = Satin	SA = Satinée
LU = Lucido	LU = Glaenzend	LU = Polished	LU = Poli
PVD = Colori speciali	PVD = Sonderfarben	PVD = Special colour	PVD = Couleurs spéciales



### COMPLEMENTS

#### Canna erogazione bordo vasca forma cigno Ø 27 H 350 mm

Cane dispensing tubside swan shape D. 27 H 350 mm  
 Schwanenhalsfoermiger-Auslauf f. Wannenrand H 350 mm Durchm. 27 mm  
 Caño de bañera forma de cisne D. 27 H 350 mm  
 Canne bord baignoire forme de cygne D. 27 H 350 mm



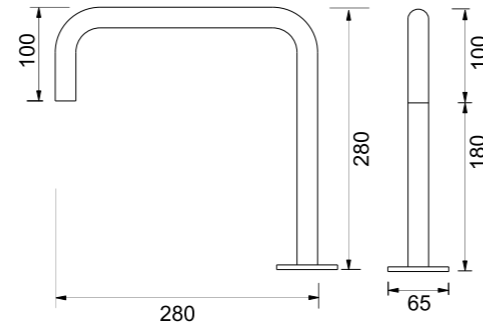
RA -rame/copper bronze GO -british gold GM -nero/gunmetal



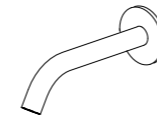
### COMPLEMENTS

#### Canna erogazione bordo vasca forma quadra Ø 27 H 280 mm

Cane dispensing tubside square shape D. 27 H 280 mm  
 U-foermiger Auslauf f. Wannenrand - Durchm. 27 mm H 280 mm  
 Caño de bañera forma cuadrada D. 27 H 280 mm  
 Canne bord baignoire forme carrée D. 27 H 280 mm



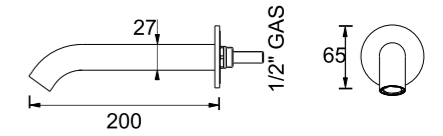
RA -rame/copper bronze GO -british gold GM -nero/gunmetal



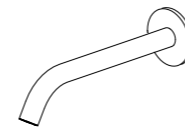
### COMPLEMENTS

#### Bocca erogazione vasca incasso a parete D. 27 P. 200 mm

Wall mount bath spout D. 27 P.200 mm  
 Wandauslauf - Durchmesser 27 mm - Ausladung 200 mm  
 Caño de bañera de pared D. 27 P.200 mm  
 Bec baignoire mur D.27 P.200 mm



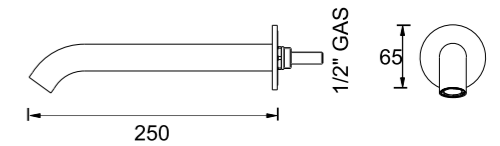
RA -rame/copper bronze GO -british gold GM -nero/gunmetal



### COMPLEMENTS

#### Bocca erogazione vasca incasso a parete D. 27 P. 250 mm

Wall mount bath spout D. 27 P.250 mm  
 Wandauslauf - Durchmesser 27 mm - Ausladung 250 mm  
 Caño de bañera de pared D. 27 P.250 mm  
 Bec baignoire mur D.27 P.250 mm



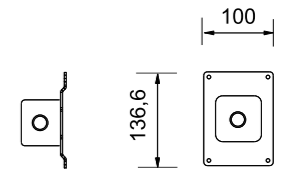
RA -rame/copper bronze GO -british gold GM -nero/gunmetal



### COMPLEMENTS

#### Corpo incasso bocche lavabo/bidet/vasca a parete

Concealed valve basin - bidet - tub for wall mount spout.  
 Unterputz-Einbauteil f. Wandauslauf mit Befestigungsplatte  
 Cuerpo empotrado caño de lavabo - bidé - bañera a pared  
 Corps encastré bouches lavabo - bidet - baignoire à mur



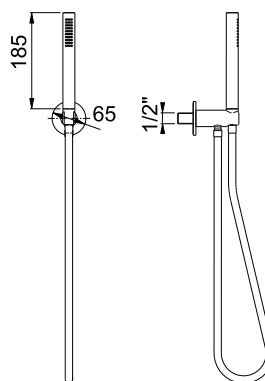
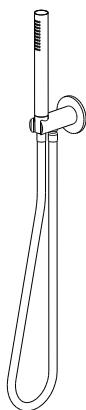
IT SA = Satinato LU = Lucido PVD = Colori speciali  
 DE SA = Satiniert LU = Glanzend PVD = Sonderfarben  
 EN SA = Satin LU = Polished PVD = Special colour  
 F SA = Satinée LU = Poli PVD = Couleurs spéciales

IT SA = Satinato LU = Lucido PVD = Colori speciali  
 DE SA = Satiniert LU = Glanzend PVD = Sonderfarben  
 EN SA = Satin LU = Polished PVD = Special colour  
 F SA = Satinée LU = Poli PVD = Couleurs spéciales

## COMPLEMENTS

### Doccetta a stilo completa attacco a parete con flessibile a molla in inox

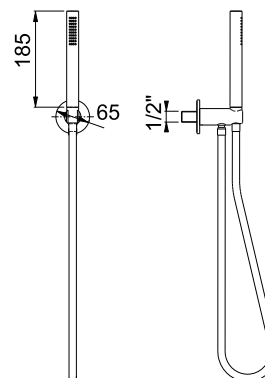
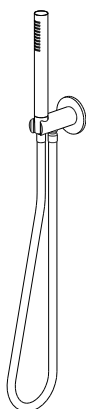
Shower hand complete wall connection  
Handbrause komplett mit Wandbefestigung  
Ducha completa con montaje en pared  
Douche complète avec support mural



## COMPLEMENTS

### Doccetta a stilo completa attacco a parete con flessibile in silicone

Shower hand complete wall connection  
Handbrause komplett mit Wandbefestigung  
Ducha completa con montaje en pared  
Douche complète avec support mural

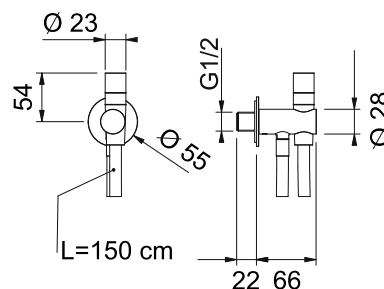
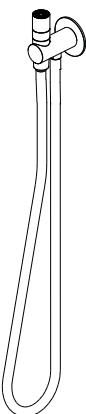


RA -rame/copper bronze GO -british gold GM -nero/gunmetal

## COMPLEMENTS

### Doccetta a parete DUPLEX completa di flessibile inox

Shower hand complete wall connection  
Handbrause komplett mit Wandbefestigung  
Ducha completa con montaje en pared  
Douche complète avec support mural



IT  
SA = Satinato  
LU = Lucido  
PVD = Colori speciali

DE  
SA = Satiniert  
LU = Glänzend  
PVD = Sonderfarben

EN  
SA = Satin  
LU = Polished  
PVD = Special colour

F  
SA = Satinée  
LU = Poli  
PVD = Couleurs spéciales